

ADDENDUM

Owner Contractor
Architect Field

Project Name: High School HVAC
Silverton I.S.D.
700 Loretta Street
Silverton, Texas 79257

Addendum No.: **One (1)**
Date: August 7, 2009
Project No.: 09098.1

This addendum shall be considered part of the Contract Documents for the above mentioned project as though it has been issued at the same time and incorporated integrally therewith. Where provisions of the following supplementary data differ from those of the original Contract Documents, this Addendum shall govern and take precedence.

Bidders are hereby notified that they shall make any necessary adjustments in their estimates on account of this Addendum. It will be construed that each Bidder's proposal is submitted with full knowledge of all modifications and supplemental data specified herein.

General Items:

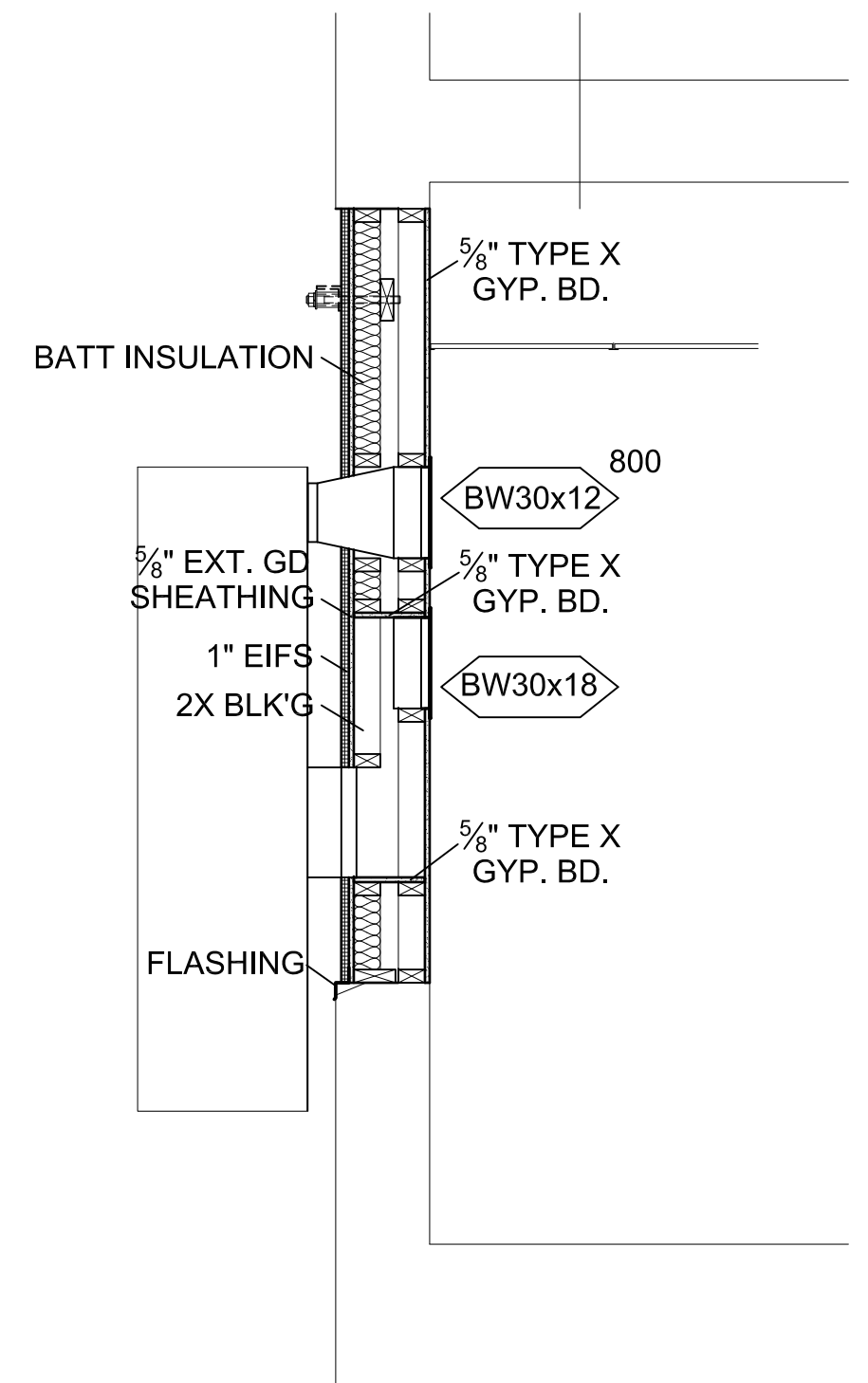
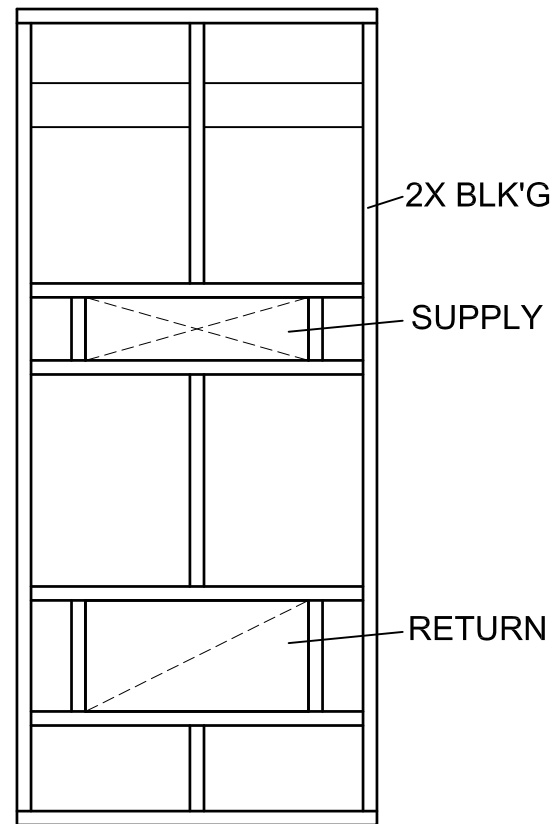
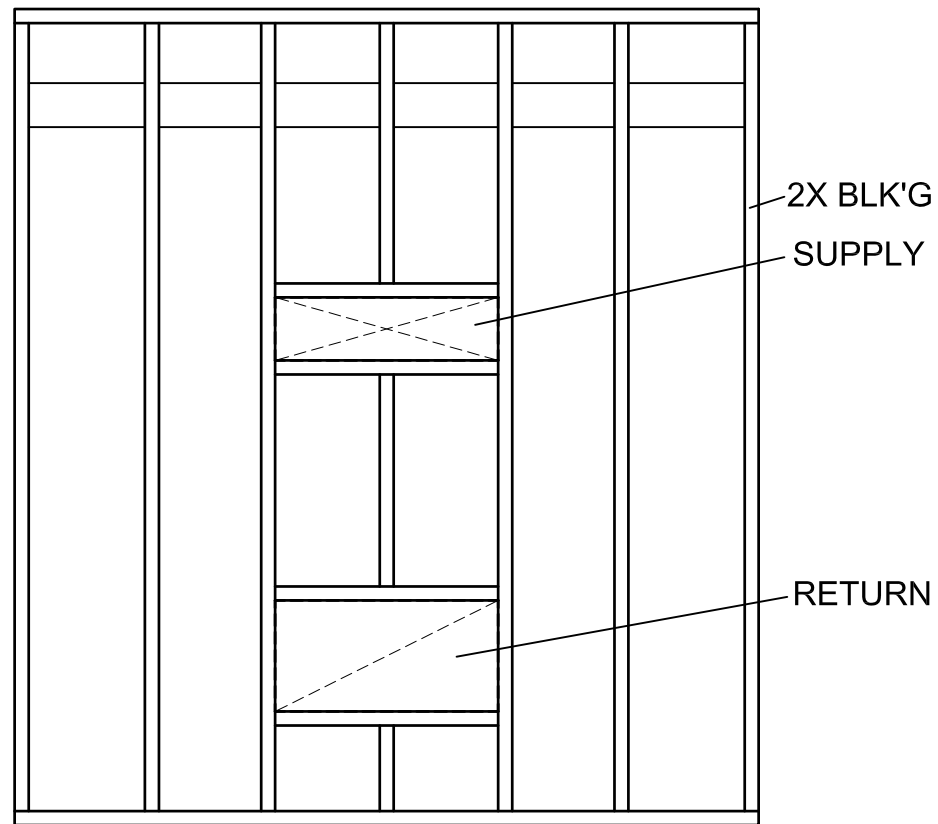
- Item No. One:** In the Specifications, Section 00030- Notice to Bidders: for clarification purposes the bid date has been moved to **Thursday, August 20th, 2009**. All other data regarding time and location remains unchanged.
- Item No. Two:** In the Specifications, Section 00300- Bid Form: for clarification purposes make the following changes;
- A. Construction Allowances: The base bid shall include contact construction contingency allowance in the amount of \$8000.00.
 - B. Delete the paragraph for Independent Testing Agency Allowance.
- Item No. Three:** In the Specifications, Section 01010- Summary of Work: for clarification purposes make the following changes;
- A. **Section 2 – Brief Description of the Base Bid**, paragraph 2.1 should read “Provide wall mount gas heat/electric cool units on first floor and replace cool only fan coils with furnace and coils on second floor as well as all associated supports, duct, pipe, and conduit.”
 - B. **Section 3 – Brief Description of the Alternates**, paragraph 3.1 should read “Provide new RTU’s for indicated rooms on second floor as well as associated supports, duct, pipe, and conduit. Remove all existing split systems along with all associated grilles, duct, and electrical.”
- Item No. Four:** In the Drawings, Sheet ME1 – MPE SITE PLAN – BASE BID & ALT #1, Provide new regulator on existing gas line to reduce 5 lbs gas pressure to match original pressure supplying existing gas fired equipment as shown on Supplementary Drawing SD-1 attached herewith.
- Item No. Five:** In the Drawings, Sheet ME2 – MPE 2nd Floor Plan - Demo, make the following changes;
- A. Omit note 6 from demo notes.
 - B. Remove existing fan coil serving auditorium and classrooms. Leave existing refrigerant lines, and duct in-place for re-use with new furnace and coil.
- Item No. Six:** In the Drawings, Sheet ME3 – 2nd Floor Plan Base Bid, make the following changes;
- A. Omit note 7 from base bid notes.
 - B. Provide new furnace and coil “F&C1” for the existing R22 condenser located on roof that serves the auditorium and classrooms. Reconnect to existing refrigerant lines, ductwork, and electrical. Provide new condensate pump and connect to existing discharge pipe. Provide concentric flue/combustion air duct up through roof, and provide ¾” gas line down to new furnace.

Item No. Seven: In the Drawings, Sheet ME4 – 2nd Floor Plan Alt #1, modify note number 7 to read “Existing fan coil and SA/RA duct serving the auditorium to remain-in-place all other duct to be removed..”

Item No. Eight: In the Drawings, Sheet ME6 – Schedules and Details, make the following changes;

- A. Provide window in-fill at wall mount units as shown on Supplementary Drawing SD-2 attached herewith.
- B. Provide new furnace and coil as scheduled on Supplementary Drawing SD-3 attached herewith.
- C. For clarification purposes the furnace and coil “F&C1” shall have a coil compatible with the new R22 condenser already installed. The furnace and coils “F&C2 and F&C3” shall have coils compatible with R410A refrigerants that will match the new R410A condensers the school will provide.

END OF ADDENDUM



WINDOW FRAMING DETAIL
 SCALE: 1/2" = 1'-0"

SUPPLEMENTAL DRAWING NO. SD-2

F&C UNIT SCHEDULE (BASE BID, DELETE UNDER ALT. 1)

SYM	AIR			COOL		HEAT		ELEC		REMARKS CARRIER
	CFM	SP	%OA/OA	Qt	Qs	Qh	FUEL	HP/MCA	SERVICE	
F&C1	1600	0.3	10%	45.9	33.2	56.0	GAS	9.5	120/1PH	58MCB06010016 WITH CARMP4817ACA
F&C2	1600	0.3	10%	45.9	33.2	56.0	GAS	9.5	120/1PH	58MCB06010016 WITH CAPMP4817ACA
F&C3	1600	0.3	10%	45.9	33.2	56.0	GAS	9.5	120/1PH	58MCB06010016 WITH CAPMP4817ACA

SUPPLEMENTAL DRAWING NO. SD-3

ME6



09098.1 High School HVAC
SILVERTON, TEXAS

Date: 7-Aug-09