

ADDENDUM

Owner Contractor
 Architect Field

Project Name: New Annex Building
 Loving County
 100 Bell St.
 Mentone, Texas 79754

Addendum No.: **Two (2)**
 Date: February 19, 2010
 Project No.: 09080

This addendum shall be considered part of the Contract Documents for the above mentioned project as though it has been issued at the same time and incorporated integrally therewith. Where provisions of the following supplementary data differ from those of the original Contract Documents, this Addendum shall govern and take precedence.

Bidders are hereby notified that they shall make any necessary adjustments in their estimates on account of this Addendum. It will be construed that each Bidder's proposal is submitted with full knowledge of all modifications and supplemental data specified herein.

General Items:

- Item No. One:** In the Specifications, 00030 – Notice To Bidders, make the following changes;
- A. Paragraph 2 – Faxed, delivered or mailed to **Grimes & Associates P.O. Box 65, 21103 FM 179 Wolforth, TX 79382 Fax Number 806-863-2479**. Sealed bids for **New Annex Building Loving County** will be received until **5:00 pm** Central Daylight Saving Time (CDT), on **March 16th, 2010**.
 - B. Paragraph 3 – Bids are to be opened and read aloud in the **Loving County Courthouse, 100 Bell St. Mentone, TX 79754 11:00 am March 17th, 2010**.
- Item No. Two:** In the Specifications, 01030 – Bid Packages, Replace Section 01030 with updated Section 01030 attached herewith.
- Item No. Three:** In the Specifications, 01050 – Wage Rates, Replace the Davis Bacon Wage Rates with the updated Davis Bacon Wage Rates attached herewith.
- Item No. Four:** In the Specifications, 02513 – Asphalt Concrete Paving, Paragraph 3.7 Item D.; for clarification purposes the finished thickness shall not be less than two (2) inches.
- Item No. Five:** In the Specifications, 08710 – Bid Packages, Replace Section 08710 with updated Section 08710 attached herewith.
- Item No. Six:** In the Drawings, Sheet C1 – Site Plan; for clarification purposes omit Site Demolition Plan Note two (2) – Close Existing Well. The well will remain as is.
- Item No. Seven:** In the Drawings, Sheet C1 – Site Plan; for clarification purposes the new crushed gravel parking shall have three (3) inches crushed gravel over compacted base.
- Item No. Eight:** In the Drawings, Sheet A1 – Floor Plan; for clarification purposes make the following changes included but not limited to.
- A. For clarification purposes add vestibule door and wall as shown on attached supplemental drawing SD-1 attached herewith.

- B. For clarification purposes add door tag ten (10) to Unisex 112 private bathroom door as shown on attached supplemental drawing SD-1 attached herewith.
- C. For clarification purposes doors no. 5, 7, 9, 12, 14, and 17 are all required to be 20 minute doors
- D. For clarification purposes window W4 is required to be 45 minute rated.

Item No. Nine: In the Drawings, Sheet A2 – Exterior Elevations & Window Schedule, Elevation 01; for clarification purposes the enlarged detail call out shall be directed to 04/A2 in lieu of 04/A9.

END OF ADDENDUM

SECTION 01030 – BID PACKAGES

1. BID PACKAGE #1 - SITE CONSTRUCTION FENCING

- 1.1. This contractor shall furnish labor, materials, equipment and services necessary for the completion of the construction fencing.
- 1.2. **THIS WORK INCLUDES, BUT IS NOT LIMITED TO:**
This contractor will use the linear footage of 1,200 feet to develop this bid.
Construction fencing consisting of 6' chain link fabric with metal T posts, construction entrance gates (2) of 10' fence panels on hinges in pairs, 4' walk gates on hinges with padlock capability (1).
This contractor will install and remove fencing at completion of project and clean fence line as necessary to blend into the grading requirement for this project.
See civil sheets for the suggested location of this fence.

2. BID PACKAGE #2 - SWPPP IMPROVEMENTS

- 2.1. This contractor shall furnish labor, materials, equipment and services necessary for the completion of all SWPPP improvements.
- 2.2. **THIS WORK INCLUDES, BUT IS NOT LIMITED TO:**
Excavation of drive off areas where rock is to be installed including any catch basins as shown.
Furnish and install rock for drive areas as shown on plans.
Furnish and install all silt fencing and hay bales to contain runoff as shown on plans.
Work with jobsite project superintendent to complete all requirements including posting signs as required.
Remove all SWPPP improvements at completion of project and clean these areas as necessary to blend into the grading requirements.

3. BID PACKAGE #3 - EARTH WORK 02200 / ASPHALTIC CONCRETE PAVING 02513

- 3.1. This contractor shall furnish labor, materials, equipment and services necessary for the completion of Site Demolition (02250), Clearing, and Grubbing, Earthwork, Aggregate Base Course, and Asphalt Concrete Paving as shown on the drawings and specified.
- 3.2. **THIS WORK INCLUDES, BUT IS NOT LIMITED TO:**
Submittals delivered in a timely fashion so as not to delay progress of project.
Removal & disposal of existing concrete scheduled for removal.
Sawing concrete and asphalt as necessary outside the building.
Removal of trees and appurtenances scheduled to be removed from the site.
Removal & disposal of existing material not needed or acceptable as fill for the site.
Import of new materials.
Top soil.
Export of other trades excess dirt.
Stabilized caliche base for Concrete Pavers.
Grading including finish grading.
Asphalt Concrete Paving including Base Course.
Patching asphalt for utility ditches.
Pavement Striping, Handicapped Markings, Handicapped Signs and poles, Parking lot wheel stops.
Retaining Walls.
Removal & Disposal of debris from these operations.

4. BID PACKAGE #4 - LAWNS AND GRASSES 02920

- 4.1. This contractor shall furnish labor, materials, equipment, and services necessary for the completion of landscaping as shown on Drawings and specified.
- 4.2. **THIS WORK INCLUDES, BUT IS NOT LIMITED TO:**
Furnish and install sod, hydro-mulch, sprigging and seeding of grasses as specified.
Proper maintenance to establish lawn and / or landscaping growth.
This includes the water tap, valves, controls, wiring, etc. if a sprinkler system is specified for this project.
Delivery and unloading of materials.
Protection of adjacent materials, structures, signs, etc.

5. BID PACKAGE #5 - TERMITE CONTROL

- 5.1. This contractor shall furnish labor, materials, equipment, and services necessary for the completion of Termite Control as shown on the drawings and specified.
- 5.2. **THIS WORK INCLUDES, BUT IS NOT LIMITED TO:**
Submittals delivered in a timely fashion so as not to delay progress of project.
Treatment of foundation and slab areas at new construction and adjacent to existing construction.
Multiple trips to the job site as necessary to accommodate construction sequence.
Removal & Disposal of debris.

6. BID PACKAGE #6 - CONCRETE CURBS, WALKS, BUILDING CONCRETE 02514 TRUNCATED BRICK PAVERS AND DIVISION 3 CONCRETE COMPLETE

- 6.1. This contractor shall furnish labor, materials, equipment, and services necessary for the completion of all building concrete, exterior concrete, curb and gutter systems, support pads for equipment, etc. as shown on the drawings and/or specified.
- 6.2. **THIS WORK INCLUDES, BUT IS NOT LIMITED TO:**
Submittals including concrete mix designs delivered in a timely fashion so as not to delay progress of project.
Retaining walls, sidewalks, flumes, and / or other concrete cast products (not including plumbing catch basins, grease traps, waste system accessories, acid dilution tanks, etc. normally to be furnished by plumbing contractor.)
Permits and/or permission for ROW improvements.
Pier driller will be included in this bid if required by plans, specifications, or jobsite conditions.
Layout and elevations will be by this contractor. At least two points will be set by independent survey service to provide permanent grade elevation for reference.
The Project Architect will be notified 48 hours in advance of all concrete placements using over 10 yards of concrete materials.
Testing will be by independent testing agency and all tests passing their requirement will be paid from a project Allowance Fund. Any tests failing will be paid for by this contractor. Any unused testing allowance will be added to the contingency allowance.
Furnish, install, and remove forms.
Furnish and install control joints and/or metal screeds / keyways.
Place and tie all reinforcing steel furnished by others.
Install embedded items associated with this work.
Install supports for reinforcing steel furnished by others.
Furnish and install sand cushion, vapor barrier and joint tape if required by specifications.
Furnish and place all concrete materials, using vibrator equipment as necessary.
Concrete finishing.
Surface preparation and/or broom finishes.
Curing and/or sealing, repairs to any finishes not acceptable to Architect.
Furnish and install caulking and sealants for concrete.
Furnish pump truck if necessary due to jobsite conditions.
Any other materials and labor associated with concrete placement not mentioned above.
Weather & vandal protection while concrete is green.
Removal & Disposal of debris.

7. BID PACKAGE #7 - COMPRESSED EARTH BLOCK 04410 SLAKED LIME PLASTER 07250

- 7.1. This contractor shall furnish labor, materials, equipment, and services necessary for the completion of this specification section using the most up to date Code of Practice, and results of previous CEM field experience.
- 7.2. **THIS WORK INCLUDES, BUT IS NOT LIMITED TO:**
Contractor must have at least 5 years experience in application and installation of CEB structures or similar building methods.
Contractor must submit a list of references with proposal to Construction Manager at the time bids are received.

Contractor must submit a mock up of CEB to be viewed on site by Architect prior to installation.
Contractor must include cost for bonding as applicable by project general and supplementary conditions as stated in project manual.
White wash lime finish over CEM building components as per finish schedule.
Pre-finished metal caps at top of CEM walls and decorative CEM steps / components as shown.
Install embedded items associated with this work.
Removal and disposal of all debris associated with this work.

8. BID PACKAGE #8 - STRUCTURAL STEEL 05120 05210 05300, MISC. STEEL 05500 05710

- 8.1. This Vendor shall furnish labor, materials, equipment and services necessary to deliver materials as shown on the drawings and specified.
- 8.2. **THIS WORK INCLUDES, BUT IS NOT LIMITED TO:**
Submittals delivered in a timely fashion so as not to delay progress of project.
All reinforcing including but not limited to straight & bent steel, wire mesh, smooth dowels, and supports.
All steel, bolts, and fasteners, pipes, handrails, etc.
Reinforcing steel and chair carriers, other imbed steel shapes, brackets, for attachment as shown on architectural plans.
All structural steel including but not limited to Structural shapes, columns, joists, deck, anchors & bolts.
Schedule delivery of materials with jobsite Project Manager at least 10 days in advance.
Unloading of materials.

9. BID PACKAGE #9 - STRUCTURAL STEEL / DECKING / SIDING / INSULATION / AND MISCELLANEOUS STEEL ERECTION

- 9.1. This Vendor shall furnish labor, materials, equipment and services necessary to Erect Structural, and associated miscellaneous steel as required for proper building component erection procedures, as shown or specified.
- 9.2. **THIS WORK INCLUDES, BUT IS NOT LIMITED TO:**
Submittals delivered in a timely fashion so as not to delay progress of project.
Erect all structural steel including but not limited to Structural shapes, columns, joists, deck.
If there is a metal building package and components this section includes the installation / erection of the metal building framing package with miscellaneous steel supports, insulation, decking, and / or metal siding and roof panels as shown on the plans or listed in the specifications.
Meet material suppliers trucks, unload, sort and stack all materials supplied.
Removal & disposal of all debris resulting from these operations.

10. BID PACKAGE #10 - CARPENTRY LABOR (INSTALLATION)

- 10.1. This contractor shall furnish labor, materials, equipment and services necessary for the completion of carpentry labor as shown as shown on the drawings and specified.
- 10.2. **THIS WORK INCLUDES, BUT IS NOT LIMITED TO:**
Installation of all Millwork, Woodwork, Casework, Open Shelving and associated trim materials.
Installation of all Plastic Laminate tops.
Installation of Toilet Partitions, and accessories.
Installation of Chalkboards, marker boards and /or tack boards, and accessories.
Installation of Framed Mirrors if specified.
Installation of projection screens.
Installation of Hollow Metal door and / or window frames not in masonry assemblies.
Installation of Hollow Metal and / or Wood doors.
Installation of Finish door hardware.
Installation of building signage including dedication plaque if required.
Installation of fire extinguisher cabinets and fire extinguishers.
Furnish and install all wood blocking, bucks, not within the single ply roofing system. (These will be by the roofing contractor.)
Labor to receive, unload, count, place, and install all items listed as installed by this contractor.
Furnishing nails, fasteners, and adhesives associated with this work.
Caulking in these sections.
Removal and disposal of debris associated with the work described above.

11. BID PACKAGE #11 - ARCHITECTURAL MILLWORK 06400

11.1. This vendor shall furnish labor, materials, equipment and services necessary to fabricate and deliver Finish Carpentry items and Custom Millwork including plastic laminate tops and/or other items as shown on the drawings and specified.

11.2. THIS WORK INCLUDES, BUT IS NOT LIMITED TO:

Submittals delivered in a timely fashion so as not to delay progress of project.

Color chips, samples, etc. for Architect to select color from.

Fabricate and deliver all plastic laminate tops, running and standing trims, and / or cabinet items including hardware.

Fabricate and deliver all architectural millwork, trim work, running and standing trim, and associated materials, including Vegas shown at the building exterior.

Furnish and deliver soffit material as specified for porch ceiling. (Species of wood as specified by addenda.)

Complete with standards, clips, pins, hardware, etc.

Schedule delivery and unloading of trucks with jobsite superintendent minimum of 10 days before requested delivery date.

12. BID PACKAGE #12 - SINGLE PLY ROOFING 07517 GUTTERS AND DOWNSPOUTS 07534

12.1. This contractor shall furnish all labor, materials, equipment and services necessary for a complete single ply roofing system as manufactured by the Duro-Last Company, or an approved equal, as shown on the drawings and specified here in.

12.2. THIS WORK INCLUDES, BUT IS NOT LIMITED TO:

Submittals delivered in a timely fashion so as not to delay progress of project.

Provide Fifteen Year No Dollar Limit roofing warranty.

Provide moisture relief vents as recommend by manufacturer.

All connections required to provide a complete water tight connection between the existing building and new construction.

Include all materials to guarantee a complete roof system.

Provide and install all gutters, scuppers, hoods, downspouts, fascia, flashings, termination bars, and caulking as noted by project drawings, specifications, or as necessary to install a complete roofing system

Furnish and install any and all wood blocking for fascia, expansion joints, or other blocking within the roofing system or in support of gutters, downspouts, fascia, flashing systems.

All wood and or plywood used within the roofing systems shall be treated materials only.

Flash all roof penetrations.

Removal and disposal of debris.

13. BID PACKAGE #13 - HOLLOW METAL DOORS AND FRAMES 08110

13.1. This vendor shall furnish labor, materials, equipment and services necessary to fabricate and deliver hollow metal doors and frames including custom hollow metal doors or frames as shown on the drawings or as specified.

13.2. THIS WORK INCLUDES, BUT IS NOT LIMITED TO:

Submittals delivered in a timely fashion so as not to delay progress of project.

Machined Steel doors and frames with hardware and anchors.

Furnish and deliver all necessary clips, anchors, fasteners, and trim as specified.

Coordination and verification of all pre-machining requirements for individual doors.

Schedule delivery and unloading of trucks with jobsite superintendent minimum of 10 days before requested delivery date.

14. BID PACKAGE #14 - FINISH HARDWARE 08710

14.1. This vendor shall furnish labor, materials, equipment and services necessary to select, co-ordinate, schedule, and deliver the complete finish hardware required for doors as listed in the door schedules and as approved during the submittal process.

14.2. Types of finish hardware required include but not limited to the following:

Hinges

Lock cylinders

Lock and latch sets
Thresholds
Closures

- 14.3. Keying requirements as per specifications and Commissioners security requirements.
Delivery FOB Jobsite, removal of all shipping debris.

15. BID PACKAGE #15 - FLUSH WOOD DOORS 08211

- 15.1. This vender shall furnish labor, materials, equipment and services necessary to fabricate and deliver Pre-Machined Flush Wood Doors (pre-finished if specified) as shown on the drawings or included in the specifications.
- 15.2. THIS WORK INCLUDES, BUT IS NOT LIMITED TO:
Submittals delivered in a timely fashion so as not to delay progress of project.
Coordination and verification of pre-machining requirements for individual doors.
Pre finished doors shall be delivered individually wrapped / boxed for protection.
Packaging and shipping of materials FOB to job site.
Schedule delivery and unloading of trucks with jobsite superintendent minimum of 10 days before requested delivery date.

16. BID PACKAGE #16 - ALUMINUM CLAD WOOD WINDOWS 08520 / GLAZINT 08800

- 16.1. This contractor shall furnish labor, materials, equipment and services necessary for the completion of work as shown on the drawings and specified.
- 16.2. THIS WORK INCLUDES, BUT IS NOT LIMITED TO:
Submittals delivered in a timely fashion so as not to delay progress of project.
Installation.
Aluminum Windows.
Security Window.
3/8" tempered glass interior pass thru money window.
9500 Series Aluminum Clad Dbl. hung windows.
Aluminum Storefront.
Mirrors.
Caulking associated with this work.
Field verification of dimensions.
Removal and disposal of debris.

17. BID PACKAGE #17 - METAL STUD WALL FRAMING 05400, GYPSUM DRYWALL 09250, ACOUSTICAL WALL PANELS, BUILDING INSULATION

- 17.1. This contractor shall furnish labor, materials, equipment and services necessary furnish, deliver, and install metal stud framing, installation of hollow metal frames in metal stud wall systems, building insulation in wall systems and / or suspended from bar joists as shown, gypsum assembles, and sound batts as shown on the drawings and/or specified.
- 17.2. THIS WORK INCLUDES, BUT IS NOT LIMITED TO:
Submittals delivered in a timely fashion so as not to delay progress of project.
Layout.
Furnish metal stud framing materials and all accessories for a complete framing system as specified.
Blocking in metal stud walls and ceilings for installation by others of Toilet Partitions and Accessories.
Installing Hollow Metal Jambs in metal stud partitions.
Fire stopping, safing.
Blocking required for toilet partitions and / or millwork will be 16 gauge flat metal strap, location by Project Manager or Carpentry Installer / Contractor.
Insulation and / or sound batts shown in walls or above ceilings.
Wire supporting for insulation requirements as shown on drawings or as specified.
Acoustical batts, caulk, as specified for work under this section including sound caulk/etc. at sound walls.
Cement backer board if specified at wet locations.
Expansion Material associated with this work.

Furnish and install all FRP wall covering with trim, adhesive, etc. section 09700

Caulking penetrations through rated partitions.

Removal and disposal of debris associated with this bid package.

18. BID ITEM #18 - ACOUSTICAL CEILINGS AND GRID SYSTEMS 09511

18.1. This contractor shall furnish labor, materials, equipment, and services to install a complete new acoustical grid system as shown on the plans and / or specified.

This contractor shall furnish labor, materials, equipment, and services to install all acoustical grid and ceiling panels as specified for this project.

18.2. THIS WORK INCLUDES, BUT IS NOT LIMITED TO:

Contracts and submittals to be returned in a timely fashion in order to not slow down any work schedule.

Seismic hangers (bracing) if required due to location or building code requirements.

Wires, hangers, as necessary to install a finish product as specified.

Caulking and sealants necessary for the complete installation of all components installed under this contract even if furnished by others.

Removal and disposal of debris associated with this trade.

19. BID PACKAGE #19 - CERAMIC TILE 09306

19.1. This contractor shall furnish labor, materials, equipment and services necessary for the completion of ceramic tile as shown on the drawings and specified.

19.2. THIS WORK INCLUDES, BUT IS NOT LIMITED TO:

Submittals complete with color samples shall be delivered in a timely fashion so as not to delay progress of project.

Mud bed if specified for tile floors.

Work shown on walls, ceilings, floors and base.

Wall Prep.

Ceramic Wall Tile and base.

Ceramic Floor Tile.

Marble Thresholds, if required.

Grout, adhesives, and caulk as required.

Removal and disposal of debris associated with this bid package.

20. BID PACKAGE #20 - FLOOR COVERINGS: CARPET 09601 AND VINYL TILE 09600

20.1. This contractor shall furnish labor, materials, equipment and services necessary for the installation of floor covering items and base as shown on the drawings and specified.

20.2. THIS WORK INCLUDES, BUT IS NOT LIMITED TO:

Submittals delivered in a timely fashion so as not to delay progress of project.

Including specialty cut medallions as specified.

VCT

Sheet Vinyl.

Carpet.

Normal floor preparation for new surfaces.

Caulking where tile joins other surfaces.

Rubber/Vinyl Base.

Transition Strips.

Removal and disposal of debris associated with this bid package.

Transition Strips.

Removal and disposal of debris.

Removal and disposal of debris.

21. BID PACKAGE #21 - PAINTING AND FINISHING 09900

21.1. This contractor shall furnish labor, materials, equipment and services necessary for the completion of work as shown on the drawings and specified.

21.2. THIS WORK INCLUDES, BUT IS NOT LIMITED TO:

Submittals delivered in a timely fashion so as not to delay progress of project.

Color charts for materials to be supplied.

Tape, bed, texture Gypsum Wallboard. (Architect to approve an on site orange peel sample by Paint Contractor).

Prepare all surfaces before painting, and between specified coating applications.

Caulking and sealants.

Paint surfaces as required whether new or scheduled to be repaired and refinished.

Paint all scheduled surfaces.

Daily removal from jobsite of any materials considered flammable, or provide an on site approved metal storage locker for flammable materials as located by Construction Superintendent and Paint Contractor.

Removal and disposal of debris associated with this bid package.

22. BID PACKAGE #22 - VISUAL DISPLAY BOARDS and PROJECTION SCREENS

22.1. This vendor shall furnish labor, materials, equipment and services necessary to fabricate and deliver Visual Display Boards, Projection Screens, Marker Boards, Tack Boards, Tack Strips and accessories as shown on the drawings and specified.

22.2. THIS WORK INCLUDES, BUT IS NOT LIMITED TO:

Submittals and color charts delivered in a timely fashion so as not to delay progress of project.

Installation of these items may be included as a separate price if this contractor installs these items.

If this contractor installs these items he will deliver or meet delivery and stock materials into rooms for his installation to follow.

Delivery FOB Jobsite.

Schedule delivery and unloading of trucks with jobsite superintendent minimum of 10 days before requested delivery date.

23. BID PACKAGE #23 - TOILET PARTITIONS 10160 and TOILET ACCESSORIES 10800

23.1. This vendor shall furnish labor, materials, equipment and services necessary to fabricate and deliver Toilet Compartments and accessories as shown on the drawings and/or specified.

23.2. THIS WORK INCLUDES, BUT IS NOT LIMITED TO:

Furnish all toilet room accessories that are specified including but not limited to, grab bars, framed mirrors, or other specified accessories.

(This does not include electric hand driers.)

Submittals and color charts to be delivered in a timely fashion so as not to delay progress of project.

Deliver FOB Jobsite.

Schedule delivery and unloading of trucks with jobsite superintendent minimum of 10 days before requested delivery date.

24. BID PACKAGE #24 - SIGNAGE INCLUDING ALUMINUM SIGNS AND LETTERS 10442 BUILDING PLAQUE 10444

24.1. This vendor shall furnish labor, materials, equipment and services necessary to fabricate and deliver Signage as shown on the drawings and specified.

24.2. THIS WORK INCLUDES, BUT IS NOT LIMITED TO:

Submittals delivered in a timely fashion so as not to delay progress of project.

Building plaque

Building signage / lettering.

Interior Signage.

Interior handicap signs.

Fasteners, adhesive.

Deliver FOB Jobsite.

25. BID PACKAGE #25 - FIRE EXTINGUISHERS 10520

25.1. This vendor shall furnish labor, materials, equipment and services necessary to fabricate and deliver Fire Extinguishers, Cabinets & Accessories as shown on the drawings and specified.

25.2. THIS WORK INCLUDES, BUT IS NOT LIMITED TO:

Submittals delivered in a timely fashion so as not to delay progress of project.

Deliver FOB Jobsite.

26. BID PACKAGE #26 - FLAG POLES

- 26.1. This vendor shall furnish labor, materials, equipment and services necessary to fabricate and deliver Flag Poles as shown on the drawings and specified.
- 26.2. THIS WORK INCLUDES, BUT IS NOT LIMITED TO:
Submittals delivered in a timely fashion so as not to delay progress of project.
Deliver FOB Jobsite.

27. BID PACKAGE #27 - PLUMBING AND MECHANICAL 15000

- 27.1. This contractor shall furnish labor, materials, equipment and services necessary for the completion of Mechanical and Plumbing as shown on the drawings and specified.
- 27.2. THIS WORK INCLUDES, BUT IS NOT LIMITED TO:
Submittals delivered in a timely fashion so as not to delay progress of project.
Mechanical and Plumbing demolition.
Disconnect prior to other trades starting demolition.
Plumber must coordinate with local government water authority regarding water and sewer and must include applicable fees (i.e. taps) in cost.
All plumbing and mechanical work shown on the plans and specified.
Sawing, removal & disposal of concrete in floors as necessary for Mechanical, Plumbing, and Electrical as shown on plans.
Flash in Roof penetrations.
Layout for utility trench inside building. Sawing and removal of concrete by others.
Removal of excess dirt from inside of building.
Sawing and removal of concrete and asphalt as necessary outside existing building.
Excavation and backfilling ditches necessary for this work.
Necessary permits and fees from local government and utility companies.
Necessary hangers and steel necessary for the installation of this contractor's equipment.
Concrete below grade at clean-outs.
Removal and disposal of debris.

28. BID PACKAGE #28 - GEO THERMAL WELL SYSTEM 15704

- 28.1. This contractor shall furnish labor, materials, equipment and services necessary for the completion of the geo thermal well system as shown on the drawings and specified.
- 28.2. THIS WORK INCLUDES, BUT IS NOT LIMITED TO:
Submittals delivered in a timely fashion so as not to delay progress of project.
Drilling, logging of depths, loop piping and headers complete to within 5' of building, media, injection of media, testing, etc.
The geo-thermal system shall be in full compliance with TCEQ requirements, with proper documentation of well depths, testing, etc.
- 28.3. THIS CONTRACTOR WILL BE RESPONSIBLE FOR CAPING THE EXISITNG WATER WELL TO BE ABANDONED AND WILL COMPLY WILL ALL TCEQ NOTIFICATIONS AND COMPLIANCE PAPERWORK.
Removal of materials (spoils) due to these procedures to an approved dump site.
Cleanup and removal of all debris resulting from these operations.

29. BID PACKAGE #29 - SEPTIC SYSTEM 15406

- 29.1. This contractor shall furnish labor, materials, equipment and services necessary for the completion of the septic system including leech field complete to within 5' of the building.
- 29.2. This contractor shall have a valid state license for this type of work.
- 29.3. THIS WORK INCLUDES, BUT IS NOT LIMITED TO:
Submittals delivered in a timely fashion so as not to delay progress of project.
This contractor will be responsible for all requirements including notification and permits from TCEQ for new septic systems.
Removal of materials (spoils) due to these procedures to an approved dump site.
Cleanup and removal of all debris resulting from these operations.

30. BID PACKAGE #30 - SPECIAL SYSTEMS

30.1. Location of electrical requirements, junction boxes, etc. for all systems will be provided to the Electrical Contractor and the project Architect for record purposes.

30.2. THESE SYSTEMS WILL BE BID SEPERATELY:

- A. **Fire protection alarm system** complete with cabling, terminations, horns, panels, etc. and certification of system compliance and operation. Training will be provided for school system personnel with a sign in sheet for record of their attendance.
- B. **Integrated telecommunications systems (Section 16763)** Telecenter 6 Backnet system with voice, telephone, intercom, and clocks. With all cabling required will be provided by this source as well as any required data systems and necessary cabling including wireless systems if required will be provided. Training will be provided for school system personnel with a sign in sheet for record of their attendance.
- C. **Building security system, both interior and exterior,** with all cabling required will be provided by this source as well as any equipment not being furnished by the outside contract noted in attachment. This will be a complete and functional system and will be bid with your layout for cameras, alarms, motion detection equipment, etc. shown on a floor plan for this project. Training will be provided for school system personnel with a sign in sheet for record of their attendance.
- D. **Energy management system (Section 15904):** Energy management will comply with the noted specification section and shall be the responsibility of this contractor to furnish and install complete.

30.3. Training will be provided for school system personnel with a sign in sheet for record of their attendance.

30.4. Computer and/or hardware for any of the above systems will be included as necessary to install a complete and functional systems noted above.

30.5. Service contract pricing for extended maintenance of these systems will be included separately for school to consider.

30.6. Cabling trays for above systems will be included as necessary or wiring will be bundled and strapped as jobsite condition allows.

30.7. Removal and disposal of all debris associated with each bid category by the contractor involved.

31. BID PACKAGE #31 - ELECTRICAL 16000

31.1. This contractor shall furnish labor, materials, equipment and services necessary for the completion of Electrical as shown on the drawings and specified in Division 16.

31.2. THIS WORK INCLUDES, BUT IS NOT LIMITED TO:

Submittals delivered in a timely fashion so as not to delay progress of project.

This contractor shall be responsible for installation of conduits required for all control or special system; if included in this project.

Telephone system or data conduits; cabling, equipment and terminations by others.

Emergency lighting systems complete; conduits, wire, fixtures, by this contractor.

Security systems conduits; cabling, equipment and terminations by others.

Alarm and clock systems conduits; cabling, equipment and terminations by others.

Energy management and integration system conduits; cabling, equipment and terminations by others.

All electrical work required at science casework, equipment, emergency shut downs with any equipment to make a complete system as per plans and specifications.

Electrical demolition. Disconnect prior to other trades demolition.

Excavation and backfilling ditches necessary for this work.

Necessary permits and fees from local government and utility companies.

Protect roof from leaks where penetrating.

This contractor is responsible for removing all electrical scheduled electrical utilities to be terminated even if the utility company does the work.

Coordinate with local power company for new power and include all applicable fees in cost.

Temporary lights & power including light bulbs.

Removal and disposal of debris associated with this bid package.

END OF SECTION 01030

GENERAL DECISION: TX20080232 10/09/2009 TX232

Date: October 9, 2009

General Decision Number: TX20080232 10/09/2009

State: Texas

Construction Type: Building

County: Loving County in Texas.

BUILDING CONSTRUCTION PROJECTS (does not include single family homes or apartments up to and including 4 stories).

Modification Number	Publication Date
0	06/19/2009
1	10/09/2009

ASBE0066-004 03/01/2008

	Rates	Fringes
ASBESTOS WORKER/HEAT & FROST INSULATOR.....	\$ 17.84	8.13

BOIL0531-001 07/01/2008

	Rates	Fringes
Boilermaker.....	\$ 26.02	13.66

IRON0263-019 06/01/2008

	Rates	Fringes
Ironworker, reinforcing and structural.....	\$ 20.90	4.60

LABO0154-010 05/01/2008

	Rates	Fringes
Laborers: (Mason Tender - Cement/Concrete).....	\$ 12.73	3.20

* PLUM0629-001 06/01/2009

	Rates	Fringes
PLUMBER.....	\$ 20.25	6.25

SUTX2009-053 04/20/2009

	Rates	Fringes
ACOUSTICAL CEILING MECHANIC.....	\$ 14.50	0.00

BRICKLAYER.....	\$ 17.76	0.00
CARPENTER, Including Drywall Hanging (Excluding Acoustical Ceiling Installation).....	\$ 13.46	0.00
CEMENT MASON/CONCRETE FINISHER...	\$ 13.27	0.00
ELECTRICIAN.....	\$ 15.85	0.00
LABORER: Common or General.....	\$ 8.72	0.00
LABORER: Landscape and Irrigation.....	\$ 8.50	0.22
LABORER: Mason Tender - Brick...	\$ 12.02	0.00
LABORER: Mortar Mixer.....	\$ 9.50	0.00
LATHER.....	\$ 12.00	0.00
OPERATOR: Backhoe/Excavator/Trackhoe.....	\$ 13.75	0.00
OPERATOR: Bulldozer.....	\$ 12.80	0.43
OPERATOR: Crane.....	\$ 21.33	0.00
OPERATOR: Forklift.....	\$ 14.58	0.00
OPERATOR: Front End Loader.....	\$ 10.54	0.00
PAINTER: Brush, Roller, and Spray.....	\$ 15.80	0.00
PLASTERER.....	\$ 12.00	0.00
ROOFER.....	\$ 15.10	1.29
SHEETMETAL WORKER (Including HVAC Duct Installation).....	\$ 18.00	0.00
TILE SETTER.....	\$ 15.00	0.00
TRUCK DRIVER.....	\$ 11.24	0.35

WELDERS - Receive rate prescribed for craft performing operation to which welding is incidental.

=====

Unlisted classifications needed for work not included within the scope of the classifications listed may be added after award only as provided in the labor standards contract clauses (29 CFR 5.5(a)(1)(ii)).

--
In the listing above, the "SU" designation means that rates listed under the identifier do not reflect collectively bargained wage and fringe benefit rates. Other designations indicate unions whose rates have been determined to be prevailing.

SECTION 08710 - FINISH HARDWARE

PART 1 - GENERAL

1. DESCRIPTION OF WORK:

- 1.1. Provide finish hardware for doors as listed in the door schedule.
- 1.2. Types of finish hardware required include the following:
 - Hinges
 - Lock cylinders and keys
 - Lock and latch sets
 - Thresholds

2. QUALITY ASSURANCE:

- 2.1. General: While the following hardware requirements are intended to cover all doors to establish a standard of quality, it shall be the duty of the finish hardware supplier to furnish proper hardware for all openings, whether listed or not. If there are any omissions in hardware groups in regard to doors, they shall be called to the engineers attention prior to bid opening. No extras will be allowed.
- 2.2. Manufacturer: Obtain each type of hardware (latch and lock set, hinges, etc.) from only one manufacturer.
- 2.3. Supplier: A recognized architectural finish hardware supplier, with warehousing facilities, who has been furnishing hardware in the project's vicinity for a period of not less than two years.
- 2.4. Accessibility: Comply with Texas Accessibility Standards (TAS) on all door hardware unless specified otherwise.

3. SUBMITTALS:

- 3.1. Product Data: Submit product specifications and installation instructions for each item of hardware. Include instructions for installation and maintenance of operating parts.
- 3.2. Hardware Schedule: Submit six copies of final hardware schedule. Coordinate hardware with doors, frames and related work. Information to include in schedule shall be as follows:
 - Type/style/function/size/finish
 - Name of manufacturer
 - Fastenings, etc.
 - Location cross-referenced to drawings
 - Keying information
- 3.3. Templates: Furnish hardware templates to each fabricator of doors, frames, and other work to be factory-prepared for the installation of hardware. Upon request, check shop drawings of such other work, to confirm that adequate provision are made for proper location and installation of hardware.
- 3.4. Keying Schedule: Prepared by or under the supervision of supplier, detailing Owner's final keying instructions for locks. Include schematic keying diagram and index each key set to unique door designations.

4. DELIVERY:

- 4.1. Deliver materials to project site in original packages, or containers bearing name and identification of manufacturer or supplier.
- 4.2. Store materials inside, under cover and in manner to keep them dry, protected from weather, direct sunlight, surface contamination, etc.
- 4.3. Tag each item or package separately, with identification related to final hardware schedule, and include basic installation instructions with each item or package.

5. SCHEDULED HARDWARE:

- 5.1. Requirements for design, grade, function, finish, size and other distinctive qualities of each type of finish hardware is indicated in the Finish Hardware Data Sheet.
- 5.2. Applicable Standards: All components shall comply with the indicated ANSI Standard:
 - Butts and hinges: ANSI A156.1
 - Locks and lock trim: ANSI A156.2

Architectural door trim: ANSI A156.6
Template hinge dimensions: ANSI A156.7
Materials and finishes: ANSI A156.18

PART 2 - PRODUCTS

6. MATERIALS AND FABRICATION:

- 6.1. Hand of door: Drawings show direction of swing or hand of each door leaf. Furnish each item of hardware for proper installation and operation of door movement as shown.
- 6.2. Manufacturer's Name Plate: Do not use manufacturer's products which have manufacturer's name or trade name displayed in a visible location, except in conjunction with required UL labels.
- 6.3. Base Metals: Produce hardware units of basic metal and forming method indicated, using manufacturer's standard metal alloy, composition, temper and hardness, but in no case of lesser quality than specified for the applicable ANSI A156 series standard for each hardware item.
- 6.4. Fasteners: Provide hardware manufactured to conform to published templates, generally prepared for machine screw installation. Do not provide hardware which has been prepared for self tapping sheet metal screws.
- 6.5. Furnish screws for installation with each hardware item. Provide flat-head Phillips screws. Finish exposed screws to match hardware finish.
- 6.6. Tools and Maintenance Instructions: Furnish a complete set of specialized tools and maintenance instructions as needed for Owner's continued adjustment, maintenance, and removal/replacement.

7. HINGES, BUTTS AND PIVOTS:

- 7.1. Screws: Provide Phillips flat-head machine screws.
- 7.2. Hinge Pins: Provide hinge pins as follows:
 - Steel Hinges: Steel pins
 - Interior Doors: Non-rising pinsNumber of Hinges: Provide not less than three (3) hinges for each door leaf.

8. LOCK CYLINDERS AND KEYING:

- 8.1. General: Supplier will meet with Owner to finalize keying requirement.
- 8.2. Equip locks with manufacturer's standard 6-pin tumbler cylinders.
- 8.3. Metals: Construct lock cylinder parts from brass/bronze, stainless steel or nickel steel.
- 8.4. Key Material: Provide keys of nickel silver only.
- 8.5. Key Quantity: Furnish three keys for each lock. Deliver keys to Owner's representative.
- 8.6. Keying System: Provide matching key system for interior and exterior doors. Unless otherwise indicated, provide a factory-registered keying system complying with the following requirements:
 - 8.6.1. Existing System: Master key or grand master key locks to Owner's existing system.
 - 8.6.2. Keyed Alike: Key all cylinders to the same change key.

9. LATCHES, BOLTS, & CLOSERS:

- 9.1. Strikes: Provide manufacturer's standard wrought box strike for each latch or lock bolt, with curved lip extended to protect frame, finish to match hardware.
- 9.2. Closers: Install door closers at all rated door units for positive latching requirements.

10. HARDWARE FINISHES:

- 10.1. Provide matching finishes for hardware units at each door or opening. Reduce differences in color and textures as much as commercially possible where the base metal forming process is different for individual units of hardware exposed at the same door or opening.
- 10.2. Provide finishes on hardware as shown on schedule at end of document. Verify color and cylinder type with aluminum storefront application.
- 10.3. The designations used in schedules and elsewhere to indicate hardware finishes are those listed in ANSI A156.18 "Materials & Finishes Standards".

PART 3 - EXECUTION

11. INSTALLATION:

- 11.1. Mount hardware units at heights indicated in "Recommended Locations for Builders Hardware for Standard Steel Doors and Frames" by the Door Hardware Institute, except as noted otherwise.
- 11.2. Install each hardware item in compliance with manufacturer's instructions.
- 11.3. Set units level, plum, and true to line and location. Adjust and reinforce the attachment substrate as necessary for proper installation and operation.
- 11.4. Drill and countersink units which are not factory-prepared for anchorage fasteners. Space fasteners and anchors in accordance with industry standards.

12. ADJUST AND CLEAN:

- 12.1. Adjust and check each operating item of hardware and each door, to ensure proper operation of function of every unit. Replace units which cannot be adjusted to operate freely and smoothly.
- 12.2. Clean adjacent surfaces soiled by hardware installation.
- 12.3. Instruct Owner's personnel in proper adjustment and maintenance of hardware and hardware finishes, during the final adjustment of hardware.

13. MORTISED LOCKSET HARDWARE SCHEDULE:

13.1. Exterior Mechanical / Electrical Closets (Single Door) Heading A		
1 1/2 pr.	Hinges BB1279BT 4 1/2 x 4 1/2 x NRP Us10A	Hager
1	Storeroom Lockset ML2057 126U 613	Corbin
1	Deadlock DL4013 613	Corbin
1	Overhead Holder 9000	ABH
1	Threshold 170D x DW	Pemko
1	Door Bottom 315DN x DW	Pemko
1 set	Weatherstrip 294AV x Opg.	Pemko
1	Overhead Drip Cap 346D x DW + 4"	Pemko
13.2. Hollow Metal Exit Doors (Pair) Heading B		
3 pr.	Hinges BB1168BT 4 1/2 x 4 1/2 x NRP Us10A	Hager
2	Exit Device ED5200S 126U 955 6P M52 613	Corbin
1	Removable Mullion 707A KM x DH	Corbin
3	Cylinders 1000 613	Corbin
2	Closers 4041 CNS SRT/TB Dkbrnz	LCN
2	Kickplates K1050 10" x DW-2" Us10B	Rockwood
1	Threshold 170B x DW	Pemko
1	Door Bottom 315DN x DW	Pemko
1 set	Weatherstrip 294AV x Opg.	Pemko
1 pr.	Brush Astragal 18041DNB x DH	Pemko
1	Overhead Drip Cap 346D x DW + 4"	Pemko
13.3. Solid Core Wood Exit Doors (Pair) Heading C		
3 pr.	Hinges BB1168BT 4 1/2 x 4 1/2 x NRP Us10A	Hager
2	Exit Device ED5200S 126U 955 6P M52 613	Corbin
1	Removable Mullion 707A KM x DH	Corbin
3	Cylinders 1000 613	Corbin
2	Closers 4041 CNS SRT/TB Dkbrnz	LCN
2	Kickplates K1050 10" x DW-2" Us10B	Rockwood
1	Threshold 170B x DW	Pemko
1	Door Bottom 315DN x DW	Pemko
1 set	Weatherstrip 294AV x Opg.	Pemko
1 pr.	Brush Astragal 18041DNB x DH	Pemko
1	Overhead Drip Cap 346D x DW + 4"	Pemko

13.4. Solid Core Wood Vestibule Doors (Pair) Heading D		
3 pr. Hinges BB1168BT 4 1/2 x 4 1/2 x NRP Us10A	Hager	
2 Pull Plates 23 Engraved x Us10B	Rockwood	
2 Push Bars 18 x DW Us10B	Rockwood	
2 Closers 4041 CNS SRT/TB Dkbrnz	LCN	
2 Kickplates K1050 10" x DW-2" Us10B	Rockwood	
1 Threshold 270B x DW	Pemko	
1 Door Bottom 315DN x DW	Pemko	
1 set Weatherstrip 294AV x Opg.	Pemko	
1 pr. Brush Astragal 18041DNB x DH	Pemko	
13.5. Solid Core Wood Interior Corridor (Single) (Fire Rated) Heading E		
1 1/2 pr. Hinges BB1279BT 4 1/2 x 4 1/2 x Us10A	Hager	
1 Passage ML2010 126U 613	Corbin	
1 Deadlock DL4013 613	Corbin	
1 Closer DC6210 M54 690	Corbin	
1 Kickplate K1050 10" x DW-2" Us10B	Rockwood	
1 Wall Stop 409 Us10B	Rockwood	
3 Silencers	Rockwood	
13.6. Solid Core Wood Interior Corridor (Single) (Fire Rated) Heading F		
1 1/2 pr. Hinges BB1279BT 4 1/2 x 4 1/2 x Us10A	Hager	
1 Storeroom Lockset ML2057 126U 613	Corbin	
1 Deadlock DL4013 613	Corbin	
1 Closer DC6210 M54 690	Corbin	
1 Kickplate K1050 10" x DW-2" Us10B	Rockwood	
1 Wall Stop 409 Us10B	Rockwood	
3 Silencers	Rockwood	
13.7. Office / Reception Heading G		
1 1/2 pr. Hinges BB1279BT 4 1/2 x 4 1/2 x Us10A	Hager	
1 Dbl. Cyl. Lock ML2022 126U 613	Corbin	
1 Closer DC6210 M54 690	Corbin	
1 Kickplate K1050 10" x DW-2" Us10B	Rockwood	
1 Wall Stop 409 Us10B	Rockwood	
1 Sound Seal 332DR x Opg.	Pemko	
1 Auto Door Bottom 434ARL x DW	Pemko	
13.8. Private Toilet Heading H		
1 1/2 pr. Hinges BB1279BT 4 1/2 x 4 1/2 x 26	Hager	
1 Privacy ML2030 126U 613/625	Corbin	
1 Closer DC6210 M54 689	Corbin	
1 Kickplate K1050 10" x DW-2" Us10B	Rockwood	
1 Wall Stop 409 Us32D	Rockwood	
3 Silencers	Rockwood	
13.9. Solid Core Wood Interior Corridor (Single) (Fire Rated) Heading I		
1 1/2 pr. Hinges BB1279BT 4 1/2 x 4 1/2 x Us10A	Hager	
1 Passage ML2010 126U 613	Corbin	
1 Deadlock DL4017 613	Corbin	
1 Closer DC6210 M54 690	Corbin	
1 Kickplate K1050 10" x DW-2" Us10B	Rockwood	
1 Wall Stop 409 Us10B	Rockwood	
3 Silencers	Rockwood	

13.10. Toilet Doors- Public (Fire Rated) Heading J		
1 1/2 pr. Hinges BB1279BT 4 1/2 x 4 1/2 x Us10A		Hager
1 Push Plate 84 Us10B		Rockwood
1 Pull Plate 130 x 84 Us10B		Rockwood
1 Closer DC6210 M54 690		Corbin
1 Kickplate K1050 10" x DW-2" Us10B		Rockwood
1 Wall Stop 409 Us10B		Rockwood
3 Silencers		Rockwood
13.11. Solid Core Wood Interior Corridor (Double Door) (Fire Rated) Heading K		
1 1/2 pr. Hinges BB1279BT 4 1/2 x 4 1/2 x Us10A		Hager
1 Flushbolt 555 Us10B @ Top		Rockwood
1 Deadlock DL4017 613		Corbin
1 Push Plate 84 Us10B		Rockwood
1 Pull Plate 130 x 84 Us10B		Rockwood
1 Closer DC6210 M54 690		Corbin
1 Kickplate K1050 10" x DW-2" Us10B		Rockwood
1 Wall Stop 409 Us10B		Rockwood
3 Silencers		Rockwood
13.12. Break Room (Fire Rated) Heading L		
1 1/2 pr. Hinges BB1279BT 4 1/2 x 4 1/2 x Us10A		Hager
1 Deadlock DL4017 613		Corbin
1 Push Plate 84 Us10B		Rockwood
1 Pull Plate 130 x 84 Us10B		Rockwood
1 Closer DC6210 M54 690		Corbin
1 Kickplate K1050 10" x DW-2" Us10B		Rockwood
1 Wall Stop 409 Us10B		Rockwood
3 Silencers		Rockwood
13.13. Heavy Duty Interior Corridor (Single Door) (Fire Rated) Heading M		
1 1/2 pr. Hinges BB1279BT 4 1/2 x 4 1/2 x Us10A		Hager
1 Office Lockset ML2057 126U 613		Corbin
2 Deadlock DL4013 613		Corbin
1 Closer DC6210 M54 690		Corbin
1 Kickplate K1050 10" x DW-2" Us10B		Rockwood
1 Wall Stop 409 Us10B		Rockwood
3 Silencers		Rockwood
13.14. Solid Core Wood Interior Corridor (Double Door) Heading N		
3 pr. Hinges BB1168BT 4 1/2 x 4 1/2 x NRP Us10A		Hager
2 Exit Device ED5470(B) 126U 955 6P (M52) M54 613		Corbin
(2) Cylinders 1000 613		Corbin)
2 Closers 4041 Reg SRT/TB Dkbrnz		LCN
2 Kickplates K1050 10" x DW-2" Us10B		Rockwood
2 Wall Stop 409 Us10B		Rockwood
2 Silencers		Rockwood
2 Magnetic Door Holder SEM7800 Dkbrnz		LCN

Door #	Heading #	From	To	Description
1	A	126	EXT	Exterior Mechanical Door
2	B	122	EXT	Corridor Vestibule Exit Door
2	B	108	EXT	Corridor Vestibule Exit Door
3	C	100	EXT	Vestibule Exit Door
3	C	100	EXT	Vestibule Exit Door
4	D	101	100	Corridor Vestibule Door
5	E	101	103	Fire Rated Office Door
5	E	102	104	Fire Rated Office Door
5	E	102	105	Fire Rated Office Door
5	E	106	105	Fire Rated Office Door
5	E	118	123	Fire Rated Office Door
5	E	117	127	Fire Rated Office Door
5	E	101	128	Fire Rated Office Door
6	G	103	104	Office Door
6	G	105	107	Office Door
7	F	101	111	Fire Rated Janitor Door
7	F	102	113	Fire Rated Storage Door
7	F	106	113	Fire Rated Storage Door
7	F	118	121	Fire Rated Storage Door
8	D	102	106	Corridor Door
8	D	106	108	Corridor Door
8	F	118	122	Corridor Door
9	E	108	109	Fire Rated Office Door
10	H	109	112	Private Toilet Door
11	I	110	106	Fire Rated Corridor Door
11	I	110	118	Fire Rated Corridor Door
12	J	102	114	Fire Rated Public Restroom Door
12	J	117	115	Fire Rated Public Restroom Door
13	K	110	101	Fire Rated Corridor Door
14	L	101	116	Fire Rated Break Room Door
14	L	110	116	Break Room Door
15	M	118	119	Fire Rated Heavy Duty Door
15	M	118	120	Fire Rated Heavy Duty Door
16	G	123	125	Office Door
16	G	123	124	Office Door
17	F	101	129	Fire Rated Storage Door
18	N	117	118	Fire Rated Corridor Door

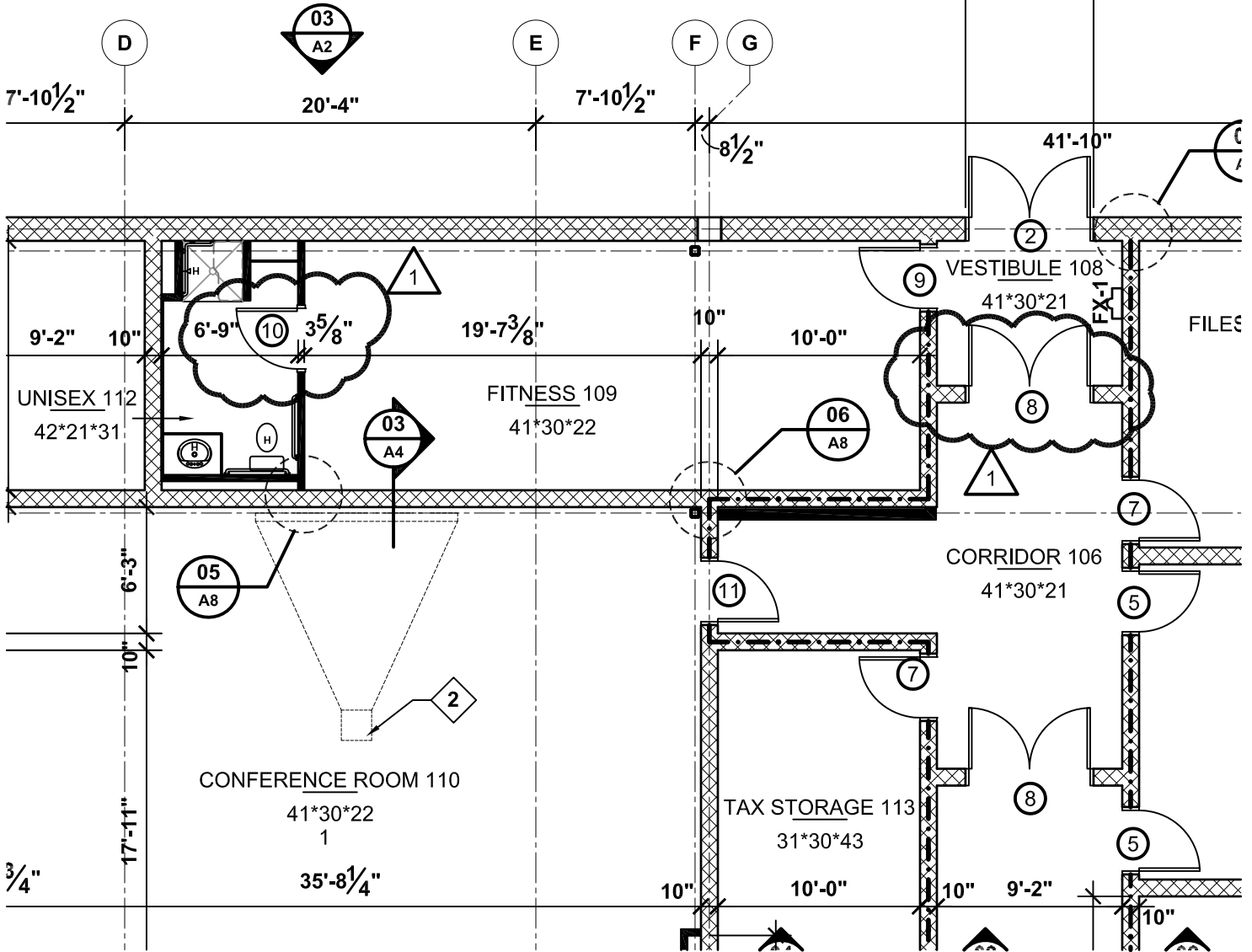
END OF SECTION 08710

142'-4"

122'-4"

62'-10"

6'-4"



SUPPLEMENTAL DRAWING NO. SD-1

Grimes & associates
 Architecture - Engineering - Environmental - Construction Management



09080 New Annex Building
 Mentone, Texas
 Date: 15-Apr-09