

NOTES FOR CORRECTIVE WORK ON ANCHOR BOLTS AND BASE PLATES:

1. At the following locations, certain bolts holes in the base plates have been burned to unfair sizes to accommodate the anchor bolts.

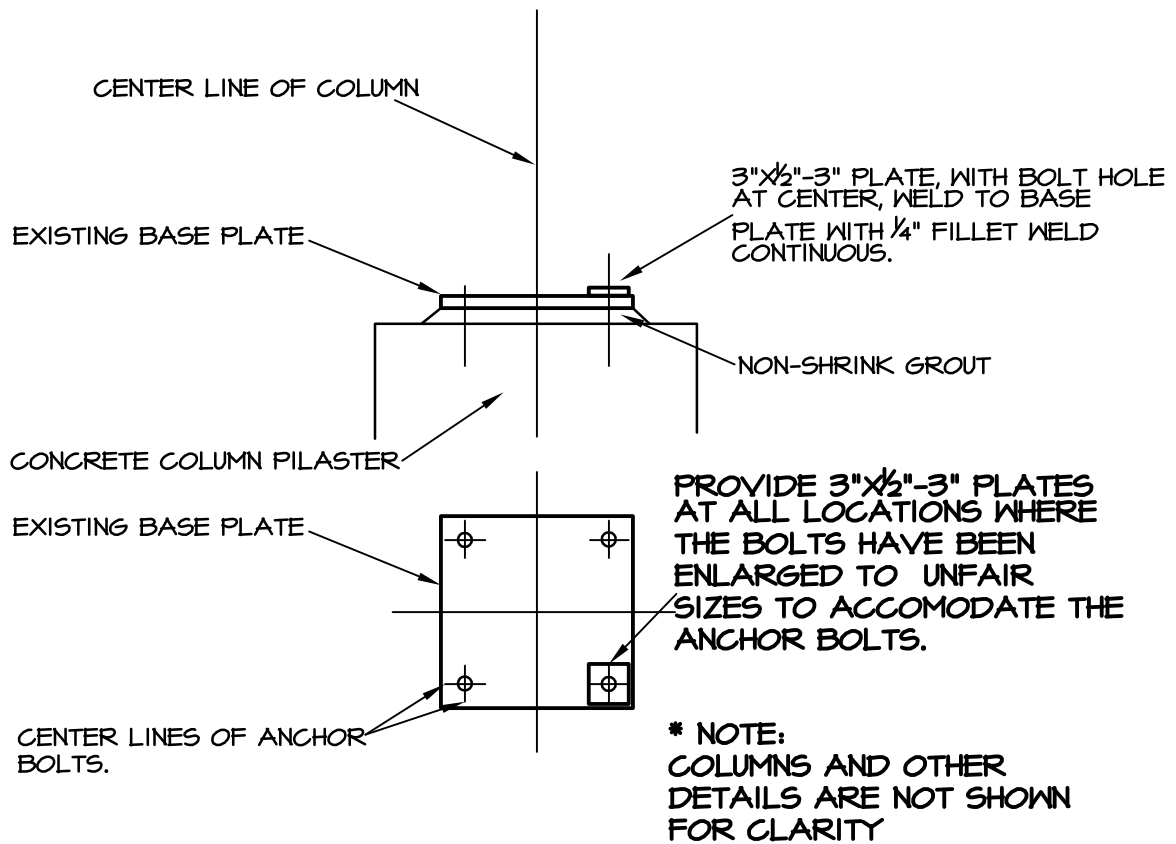
EE-11, FF-11, CC-66', DD'-88, FF-66', FF"-88, Between MM and NN along grid 88, S-3' and S-4".

These are the locations noted on site. These base plates are to be repaired/fixed as shown on the supplementary drawing No. 34. At certain other locations, there was standing muddy water at the base plate area, and the condition of the base plates could not be verified. It is recommended that the Contractor to remove the water and expose the base plates, and if the base plates are to be fixed for unfair holes, they shall be repaired as shown on the supplementary drawing No. 34.

2. At the intersection of Grid lines FF" and 88, provide a new bolt, drill and epoxy into existing concrete pilaster. Provide 18" embedment into concrete.
3. Certain nuts of the anchor bolts were found to be not tightened properly. The contractor shall make sure that all anchor bolt nuts are tightened properly and secured.
4. Base plates, anchor bolts and area underneath shall be cleaned properly prior to packing with Non-shrink grout under the base plates.
5. Prior to packing with Non-shrink grout, call the engineer of record for an inspection.

NOTES FOR CORRECTIVE WORK ON STRUCTURAL STEEL BEAMS ALONG GRID LINE 11, BETWEEN EE AND 3, AND BETWEEN 4 AND LL.

1. Beam flange to be notched where it interferes with the Metal Building Column. Carefully mark the location of the notch. Drill a 1/2" dia. Hole, and cut flange at 45 deg. (as shown) . Provide a 5"x1/2"-2'-6" long plate at top and bottom of the beam, secure to beam with 3/16" fillet weld (2"/12") continuous.



SECTION

01



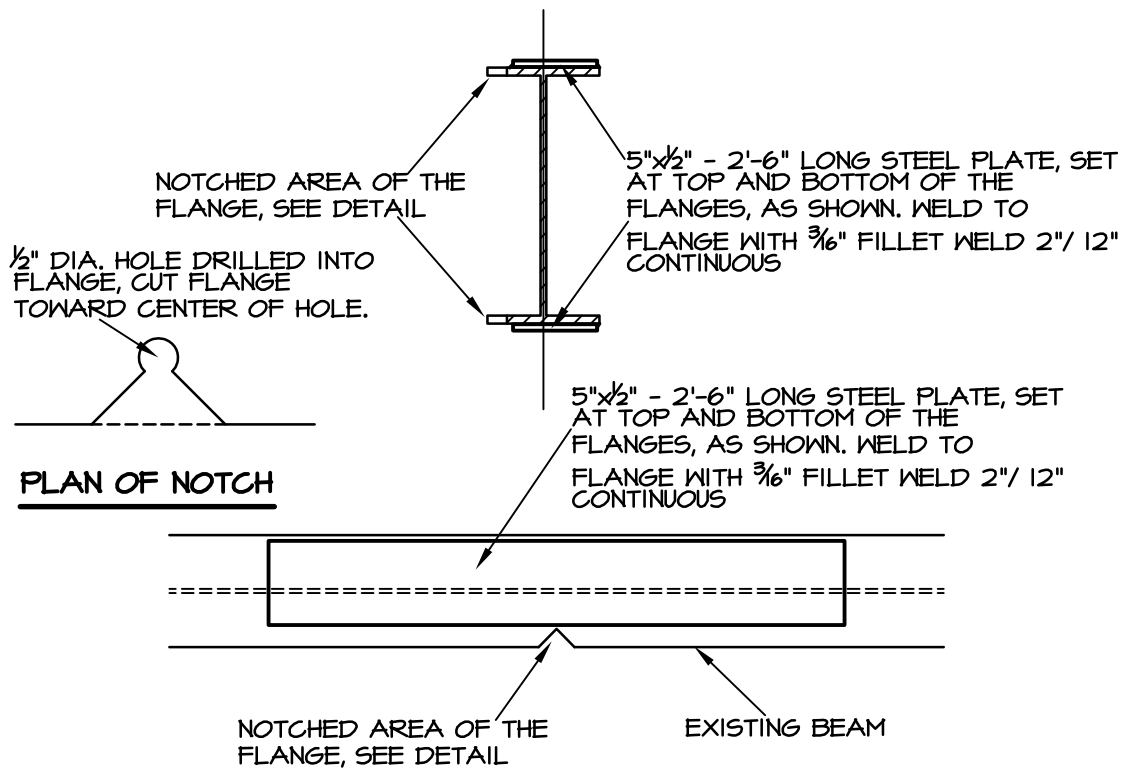
C.V. Surendran
09-21-09

SUPPLEMENTARY DRAWING NO. 34

NEW HIGH SCHOOL FOR HALE CENTER IND. SCHOOL DISTRICT
2008 IMPROVEMENTS- HALE CENTER, TEXAS

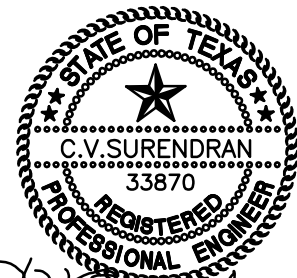
SC	SURENDRAN CONSULTING STRUCTURAL ENGINEERS
	8107 Kenosha Avenue Lubbock, TX 79423-1723 www.surendranconsulting.com
	Phone: 806.793.8668 Fax: 806.795.1582

SHEET NO. 1 OF 1
DATE: SEPTEMBER 21, 2009



SECTION

01



C.V. Surendran
09-21-09

SUPPLEMENTARY DRAWING NO. 35

NEW HIGH SCHOOL FOR HALE CENTER IND. SCHOOL DISTRICT
2008 IMPROVEMENTS- HALE CENTER, TEXAS

SC	SURENDRAN CONSULTING STRUCTURAL ENGINEERS
	<p>8107 Kenosha Avenue Lubbock, TX 79423-1723 www.surendranconsulting.com</p> <p>Phone: 806.793.8668 Fax: 806.795.1582</p>

SHEET NO. 1 OF 1
DATE: SEPTEMBER 21, 2009