
SUPPLEMENTAL INSTRUCTIONS

Owner Contractor
Architect Field

Project Name: New High School

Owner: Hale Center I.S.D.

Architect's Supplemental

Instruction No.: 1

Date: 21-Jan-09

Project No.: 07027

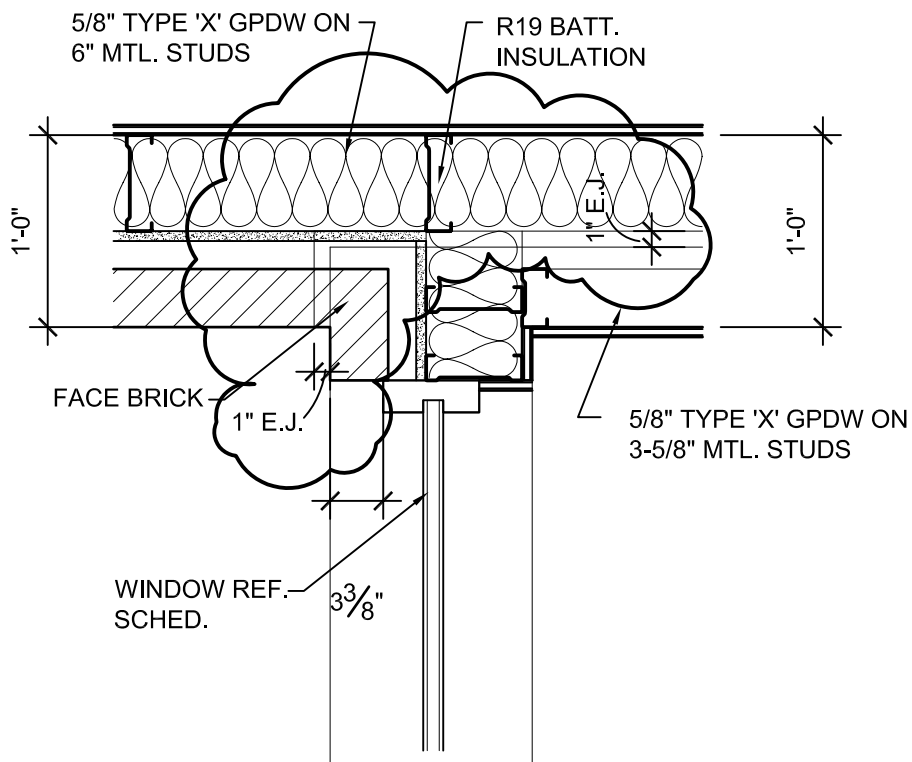
The work shall be carried out in accordance with the following Supplemental Instructions issued in accordance with the Contract Documents without any change in Contract Sum or Contract Time. Proceeding with the Work in accordance with these instructions indicates your acknowledgment that there will be no change in the Contract Sum or Contract Time.

Description:

Item No. One: In the Drawings, Sheet A10 – Wall Sections, Detail 14; For clarification purposes replace detail 14/A10 with Supplemental Drawing SD-27 attached herewith.



Grimes & Associates
P.O. Box 65
Wolfforth, Texas 79382
Phone: (806) 863-2662
Fax: (806) 863-2479



DETAIL

14

SCALE: 1"=1'-0"

SUPPLEMENTAL DRAWING NO. SD-27

14/A10



g grimes & associates
 (806) 863-2462 Architects / Engineers P.O. Box 65
 (806) 863-2479 Fax Wolfforth, Texas 79382

NEW HIGH SCHOOL
 HALE CENTER, TX
 Date: 21-Jan-09