

SECTION

01

THIS DETAIL IS TO BE USED FOR ALL THE FOOTINGS AT GRID INTERSECTIONS 15Q, 16Q, AND FOR THE FOUR TUBE COLUMNS IN THE STAIRCASE ROOM B04. TWO OF THESE COLUMNS ARE TO BE ALIGNED ALONG THE GRID LINE 30.



C.V. Surendran
10-09-09

SUPPLEMENTARY DRAWING NO. 100

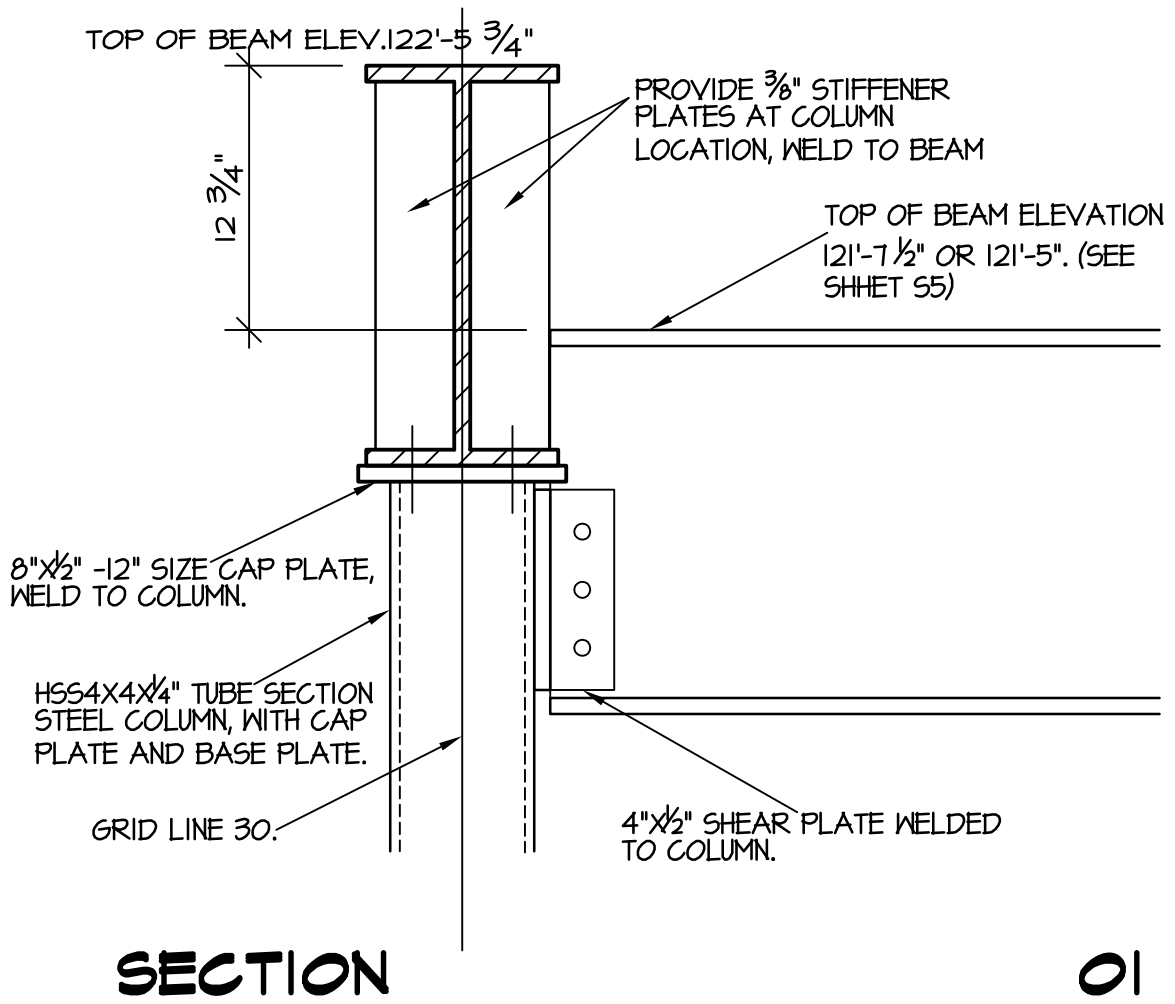
REAGAN COUNTY IND. SCHOOL DISTRICT, BIG LAKE, TEXAS
HIGH SCHOOL REMODELING, 2008 IMPROVEMENTS-PHASE II

SC SURENDRAN CONSULTING STRUCTURAL ENGINEERS

8107 Kenosha Avenue
Lubbock, TX 79423-1723
www.surendranconsulting.com

Phone: 806.793.8668
Fax: 806.795.1582

SHEET NO. 1 OF 1
DATE: OCT 09, 2009



THIS DETAIL IS TO BE USED FOR THE COLUMN-BEAM CONNECTION, TO THE EAST OF GRID LINE 30, BETWEEN GRIDS X AND Y. THE TWO COLUMNS C4 ARE TO BE MOVED TO GRID LINE 30.

C.V. Surendran
10-09-09

SUPPLEMENTARY DRAWING NO. 101

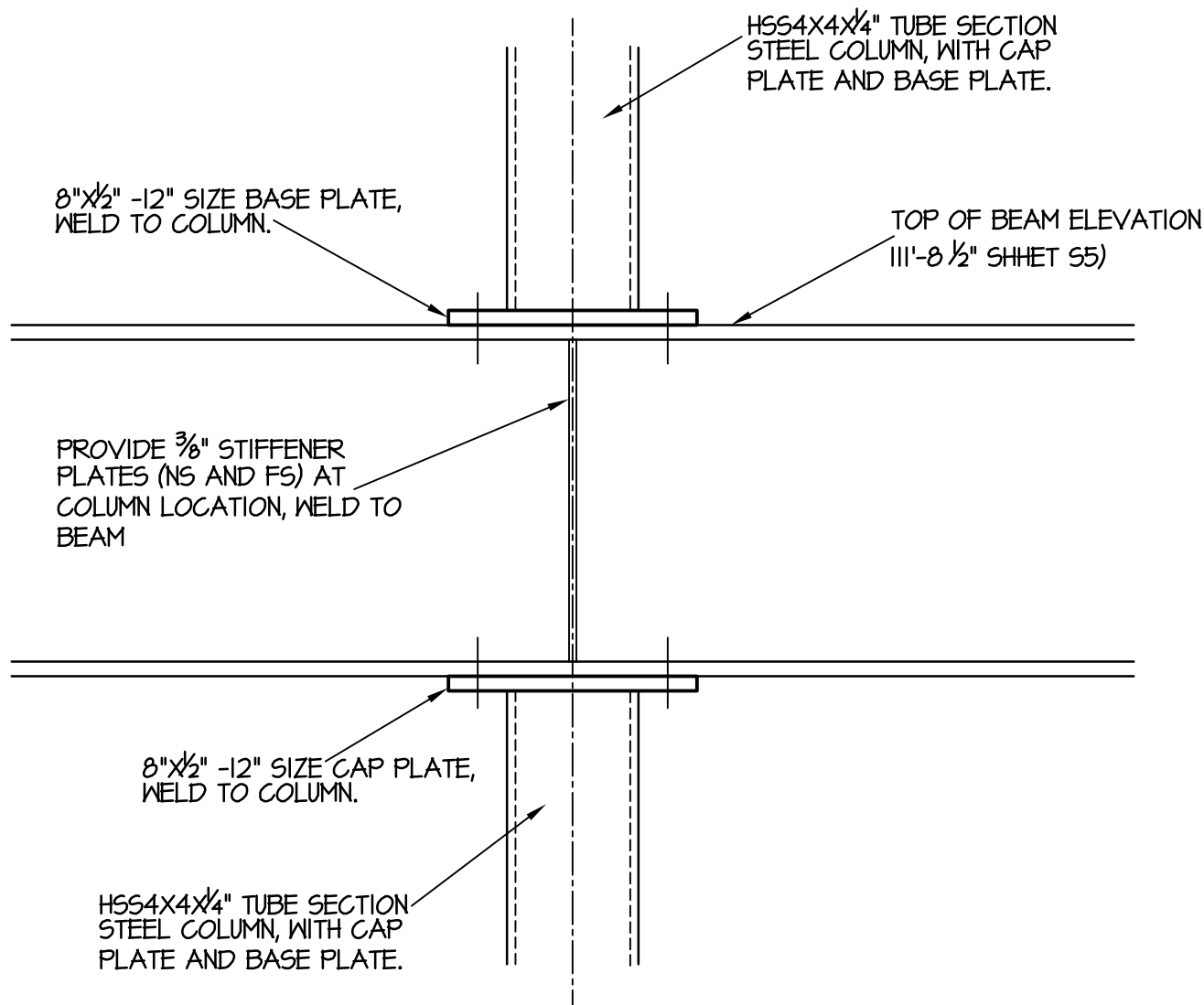
REAGAN COUNTY IND. SCHOOL DISTRICT, BIG LAKE, TEXAS
HIGH SCHOOL REMODELING, 2008 IMPROVEMENTS-PHASE II

**SURENDRAN CONSULTING
STRUCTURAL ENGINEERS**

8107 Kenosha Avenue
Lubbock, TX 79423-1723
www.surendranconsulting.com

Phone: 806.793.8668
Fax: 806.795.1582

SHEET NO. 1 OF 1
DATE: OCT 09, 2009



SECTION

01

REFER TO SHEET 54. AREA EAST OF GRID LINE 30, BETWEEN GRID LINES X AND Y. THE TWO (2) COLUMNS C4 MOVED TO GRID LINE 30 SHALL BE SECURED TO BEAM AT THE SECOND FLOOR LEVEL, AS SHOWN.



C.V. Surendran
10-09-09

SUPPLEMENTARY DRAWING NO. 102

REAGAN COUNTY IND. SCHOOL DISTRICT, BIG LAKE, TEXAS
HIGH SCHOOL REMODELING, 2008 IMPROVEMENTS-PHASE II

	SURENDRAN CONSULTING STRUCTURAL ENGINEERS
	8107 Kenosha Avenue Lubbock, TX 79423-1723 www.surendranconsulting.com

Phone: 806.793.8668
Fax: 806.795.1582

SHEET NO. 1 OF 1
DATE: OCT 09, 2009

LANDING ELEVATION -
113'-8 3/4" SEE ARCH PLANS.

STAIR LANDING
STRINGERS.

TOP OF EXISTING
CONCRETE BEAM
ELEVATION 113'-4 3/16"
(FIELD VERIFY).

EXISTING CONCRETE BEAM

L4X4X3/8" ANGLE- 4'-6" (+/-), SECURE
TO EXISTING CONCRETE BEAM WITH 5-
3/4" DIA. EXPANSION (OR CHEMICAL
ANCHORS) BOLTS, (6" MINIMUM
EMBEDMENT).

SECTION

01

THIS DETAIL IS FOR SUPPORTING THE STAIR
LANDING STRINGERS TO THE EXISTING
CONCRETE BEAM. (STAIR B04)



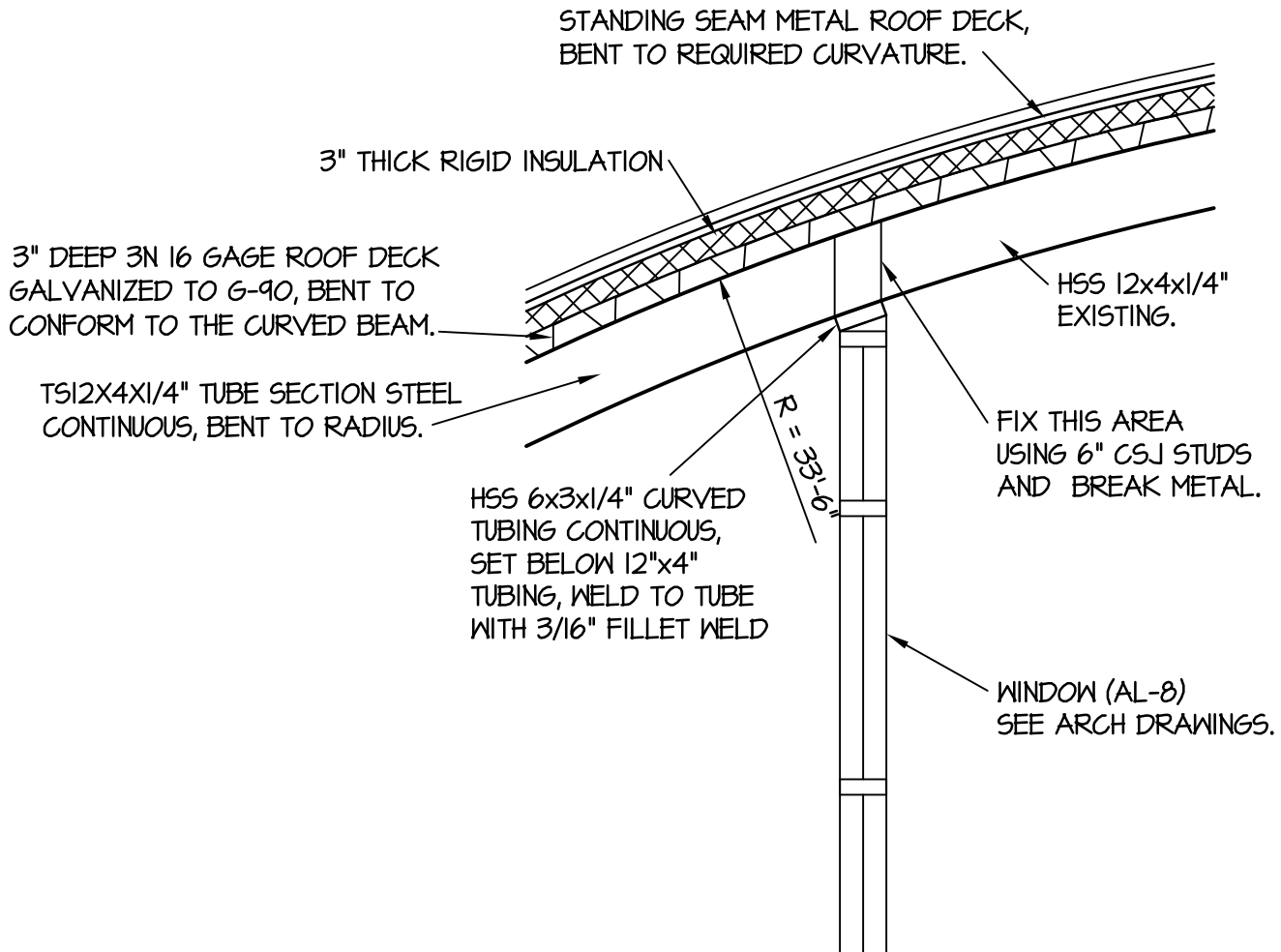
C.V. Surendran
10-09-09

SUPPLEMENTARY DRAWING NO. 103

REAGAN COUNTY IND. SCHOOL DISTRICT, BIG LAKE, TEXAS
HIGH SCHOOL REMODELING, 2008 IMPROVEMENTS-PHASE II

SC	SURENDRAN CONSULTING STRUCTURAL ENGINEERS	
	8107 Kenosha Avenue Lubbock, TX 79423-1723 www.surendranconsulting.com	Phone: 806.793.8668 Fax: 806.795.1582

SHEET NO. 1 OF 1
DATE: OCT 09, 2009



SECTION

01

REFER TO SHEETS S7 AND S8. THIS DETAIL IS FOR AREA C ON SHEET S7, SECTION 01/S8. SHOWING THE CONNECTION OF THE AL-8 HEADER TO THE STRUCTURAL FRAME.



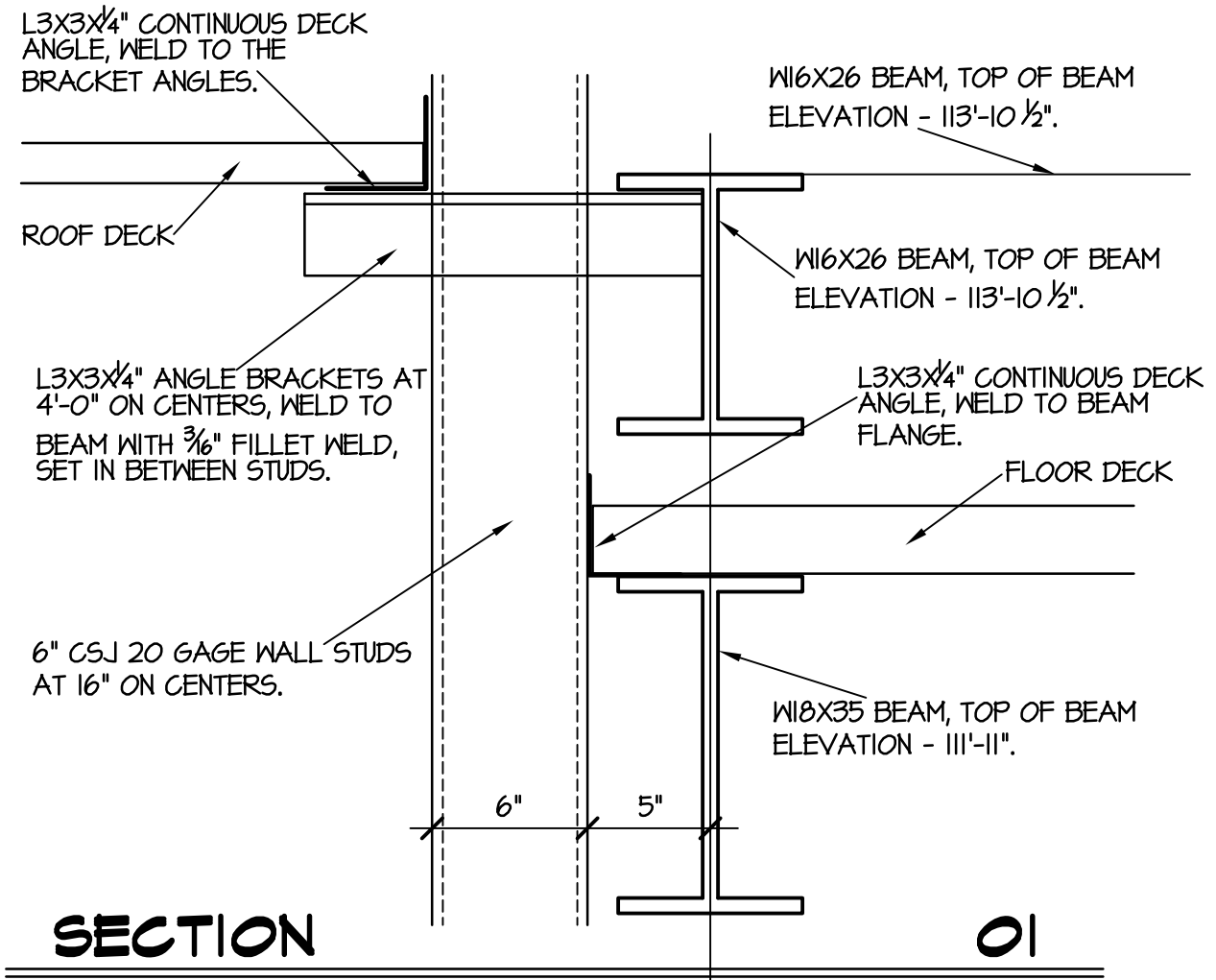
C.V. Surendran
10-09-09

SUPPLEMENTARY DRAWING NO. 104

REAGAN COUNTY IND. SCHOOL DISTRICT, BIG LAKE, TEXAS
HIGH SCHOOL REMODELING, 2008 IMPROVEMENTS-PHASE II

SC	SURENDRAN CONSULTING STRUCTURAL ENGINEERS
	8107 Kenosha Avenue Lubbock, TX 79423-1723 www.surendranconsulting.com
	Phone: 806.793.8668 Fax: 806.795.1582

SHEET NO. 1 OF 1
DATE: OCT 09, 2009



REFER TO SHEET S5, AREA AT GRID LINE N, BETWEEN GRID LINES 28 AND 30. THIS IS A DETAIL SHOWING THE CONNECTION OF ROOF DECK TO THE STRUCTURE. THE BRACKET ANGLES SHALL BE PLACED OFFSET FROM THE 6" STUDS.



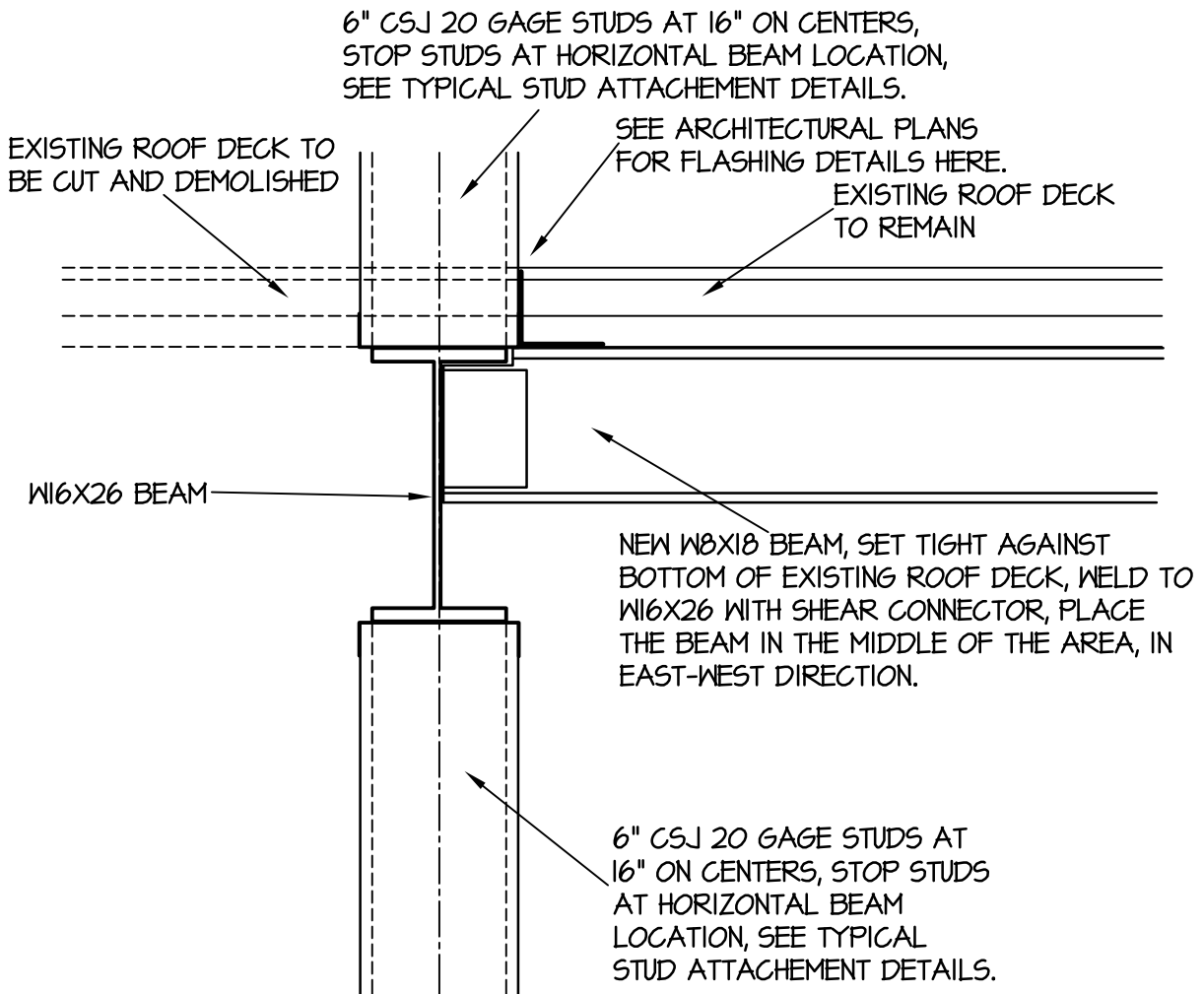
C.V. Surendran
10-09-09

SUPPLEMENTARY DRAWING NO. 105

REAGAN COUNTY IND. SCHOOL DISTRICT, BIG LAKE, TEXAS
HIGH SCHOOL REMODELING, 2008 IMPROVEMENTS-PHASE II

	SURENDRAN CONSULTING STRUCTURAL ENGINEERS
	8107 Kenosha Avenue Lubbock, TX 79423-1723 www.surendranconsulting.com
	Phone: 806.793.8668 Fax: 806.795.1582

SHEET NO. 1 OF 1
DATE: OCT 09, 2009



SECTION

01

THIS DETAIL IS FOR THE AREA EAST OF THE STAIR CASE B04, IN THE EXISTING ROOF FRAMING. ONCE THE JOIST IS MOVED TO THE SOUTH SIDE, THE ROOF DECK AND BULB-TEES NEED TO HAVE SUPPORT. PROVIDE THE SUPPORT AS DETAILED ABOVE.



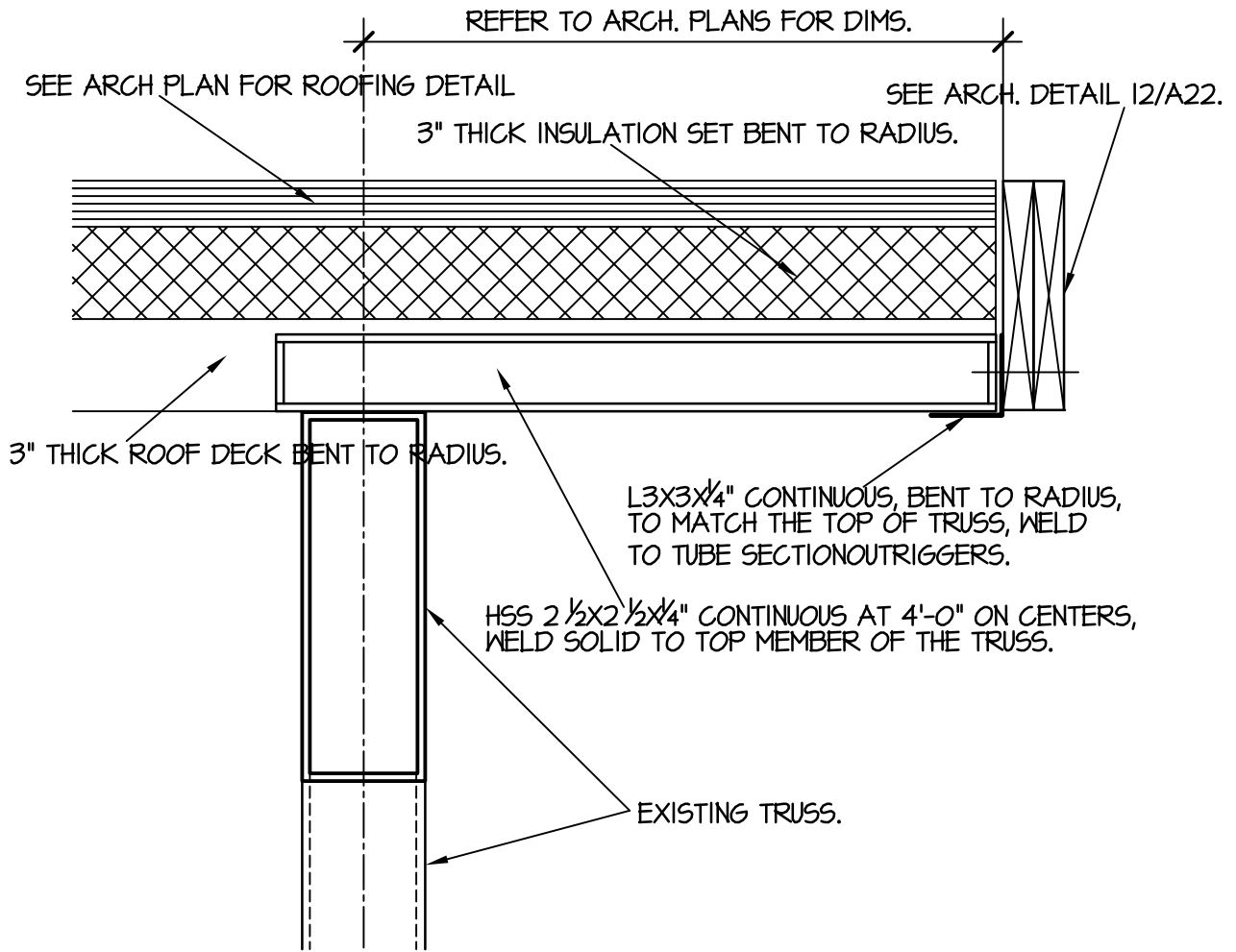
C.V. Surendran
10-09-09

SUPPLEMENTARY DRAWING NO. 106

REAGAN COUNTY IND. SCHOOL DISTRICT, BIG LAKE, TEXAS
HIGH SCHOOL REMODELING, 2008 IMPROVEMENTS-PHASE II

SC	SURENDRAN CONSULTING	
	STRUCTURAL ENGINEERS	
	8107 Kenosha Avenue	Phone: 806.793.8668
	Lubbock, TX 79423-1723 www.surendranconsulting.com	Fax: 806.795.1582

SHEET NO. 1 OF 1
DATE: OCT 09, 2009



SECTION

01

THIS DETAIL IS TO BE USED AT 01/A20, 02/A20 AND 03/A20.



C.V. Surendran
10-09-09

SUPPLEMENTARY DRAWING NO. 107

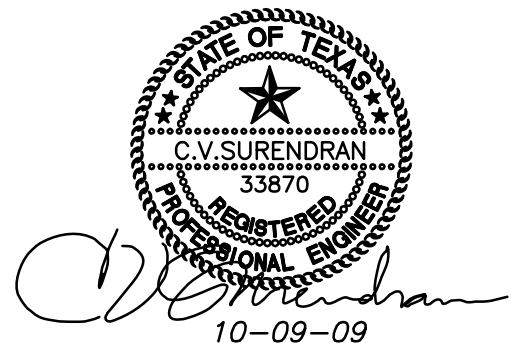
REAGAN COUNTY IND. SCHOOL DISTRICT, BIG LAKE, TEXAS
HIGH SCHOOL REMODELING, 2008 IMPROVEMENTS-PHASE II

	SURENDRAN CONSULTING STRUCTURAL ENGINEERS
	8107 Kenosha Avenue Lubbock, TX 79423-1723 www.surendranconsulting.com
	Phone: 806.793.8668 Fax: 806.795.1582

SHEET NO. 1 OF 1
DATE: OCT 09, 2009

SUPPLEMENTARY DRAWING NOTES

1. The short stub beam added and welded to 18C1 (shop drawing designation) may be removed in order to eliminate conflict with the existing concrete beam. This stub beam may be moved to North by about 4 or 5 feet and attached to the side of the beam in order to catch the joist west of grid line 17'.
2. After looking at some construction photographs, it was observed that at certain areas, stiffener plates were not provided for beam to column connections, and beam to beam connections. Refer to the original contract drawings for typical details. These shall be corrected as per drawings.
3. The 12" deep joists at roof, south of the grid line BB', between grid lines 10 and 17 were fabricated with a 2 1/2" seat, in lieu of 5" deep seat at the north end, as indicated on the drawing. Provide HSS3 1/2"x2 1/2"x1/4" tube section steel continuous, weld to the top of beam, and place the joists over this tube section steel. This way the top of these joists will match with the top of the long span joists in the band hall area.



SUPPLEMENTARY DRAWING NO. 108

REAGAN COUNTY IND. SCHOOL DISTRICT, BIG LAKE, TEXAS
HIGH SCHOOL REMODELING, 2008 IMPROVEMENTS-PHASE II



SHEET NO. 1 OF 1
DATE: OCT 09, 2009